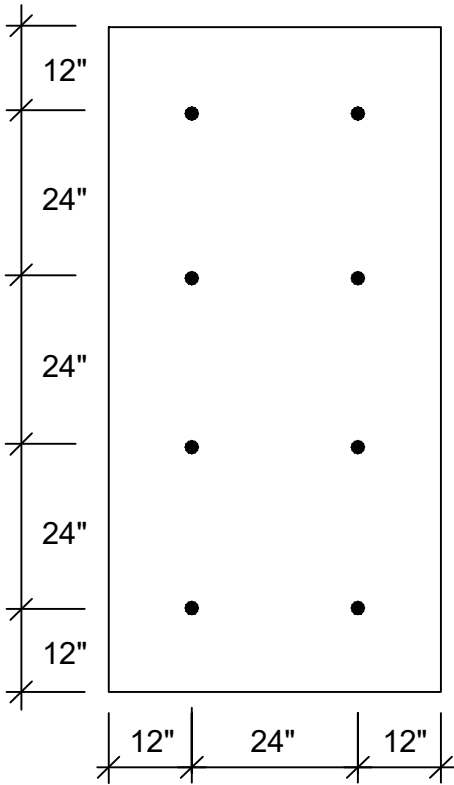


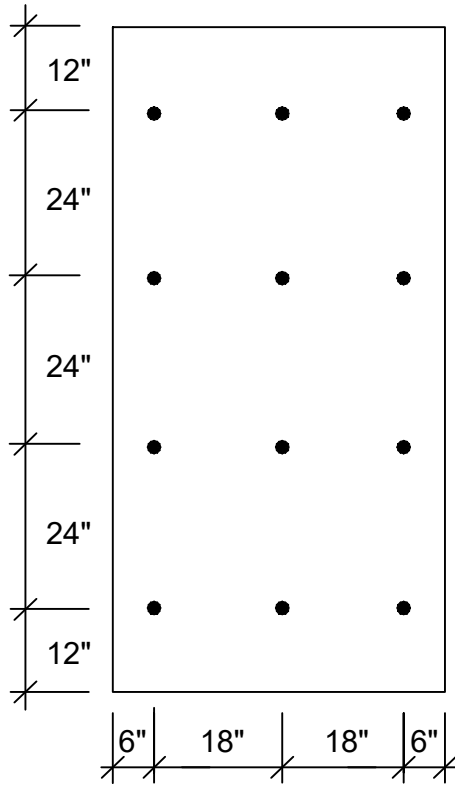
**NOTE: OPEN PDF IN ADOBE READER, SELECT THE LAYERS TAB, THEN TURN ON/OFF DESIRED OPTIONS.**

### FIELD AREA



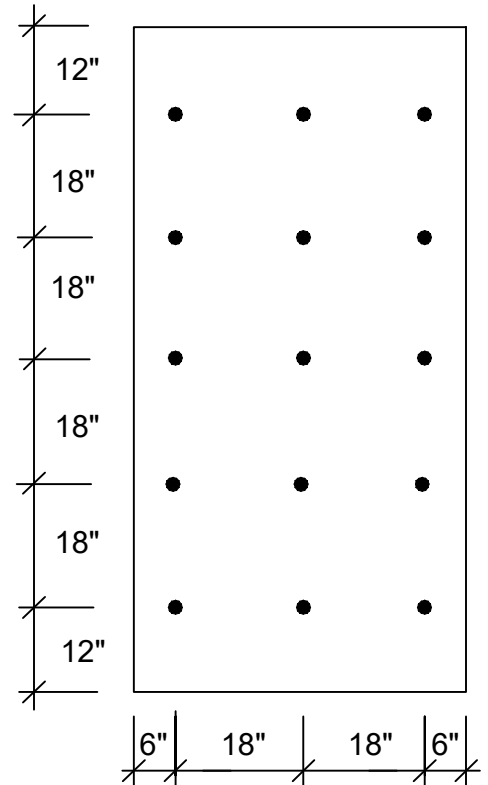
8 FASTENERS PER  
4' x 8' BOARD

### PERIMETER AREA



12 FASTENERS PER  
4' x 8' BOARD

### CORNER AREA



15 FASTENERS PER  
4' x 8' BOARD

**NOTE:**

- THIS DETAIL DRAWINGS IS PROVIDED BY GAF FOR THE SOLE PURPOSE OF OBTAINING A GAF SYSTEM WARRANTY OR GUARANTEE AND IS NOT A SUBSTITUTE FOR PROFESSIONAL DESIGN SERVICES. GAF MAKES NO REPRESENTATION OR WARRANTY WITH RESPECT TO CODE COMPLIANCE OR SUITABILITY OR THIS DETAIL FOR ANY PARTICULAR PROJECT.

|                 |          |                              |      |            |        |  |        |
|-----------------|----------|------------------------------|------|------------|--------|--|--------|
| LEGEND          |          | INSULATION FASTENING PATTERN |      |            |        |  | DETAIL |
| ● ● ● FASTENERS | PROJECT: |                              |      |            |        |  | 101    |
|                 | NO.      | REVISION                     | DATE | ISSUE DATE | SCALE  |  |        |
|                 |          |                              |      | 6/26/22    | N.T.S. |  |        |