

PLAN VIEW
(SEE NOTE #2)

EVERGUARD® PREMOLDED VENT BOOT

2" [51 mm] MIN.

REINFORCED EVERGUARD® MEMBRANE TARGET PATCH

VENT STACK OR PIPE PENETRATION

EVERGUARD® WATER-BLOCK OR FLEXSEAL™ CAULK-GRADE SEALANT

STAINLESS STEEL BAND CLAMP

EVERGUARD® PREMOLDED VENT BOOT

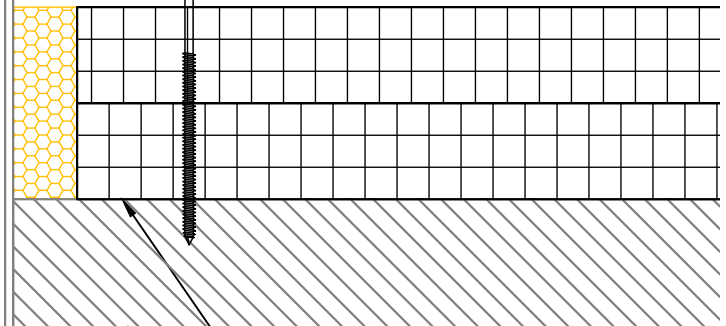
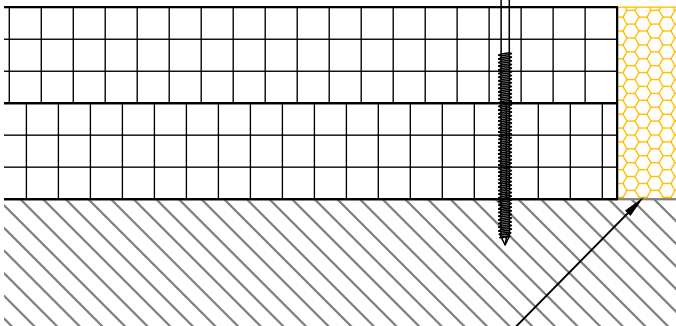
DRILL-TEC™ PLATES & FASTENERS, MIN. (4) PER PENETRATION

REINFORCED EVERGUARD® MEMBRANE

SHOWN WITH TARGET PATCH MADE FROM REINFORCED EVERGUARD® MEMBRANE; SEE NOTE #2

2" [51 mm] MIN.

1" [25 mm] MIN.



POCKETS FILLED WITH CLOSED-CELL FOAM INSULATION

MULTIPLE LAYERS OF ENERGYGUARD™ POLYISO INSULATION STAGGERED AND OFFSET

ROOF DECK / SUBSTRATE

Notes:

1. Do not cut through the side of the EverGuard® Premolded Pipe Boot to wrap around the pipe, it must be pulled over the top.
2. A target patch is required when the plates and fasteners extend into the flange area of the boot, or if the insulation thickness exceeds 12" [305 mm].
3. This detail is for use at locations with ambient interior temperatures only.

LEGEND

	HEAT WELD
	ADHESIVE
	SEALANT

Premolded Pipe Boot Installation

Roof Area:
Penetrations

Issue Date:
11/13/2023

Scale:
N.T.S.

Detail No:

506B