

Notes:

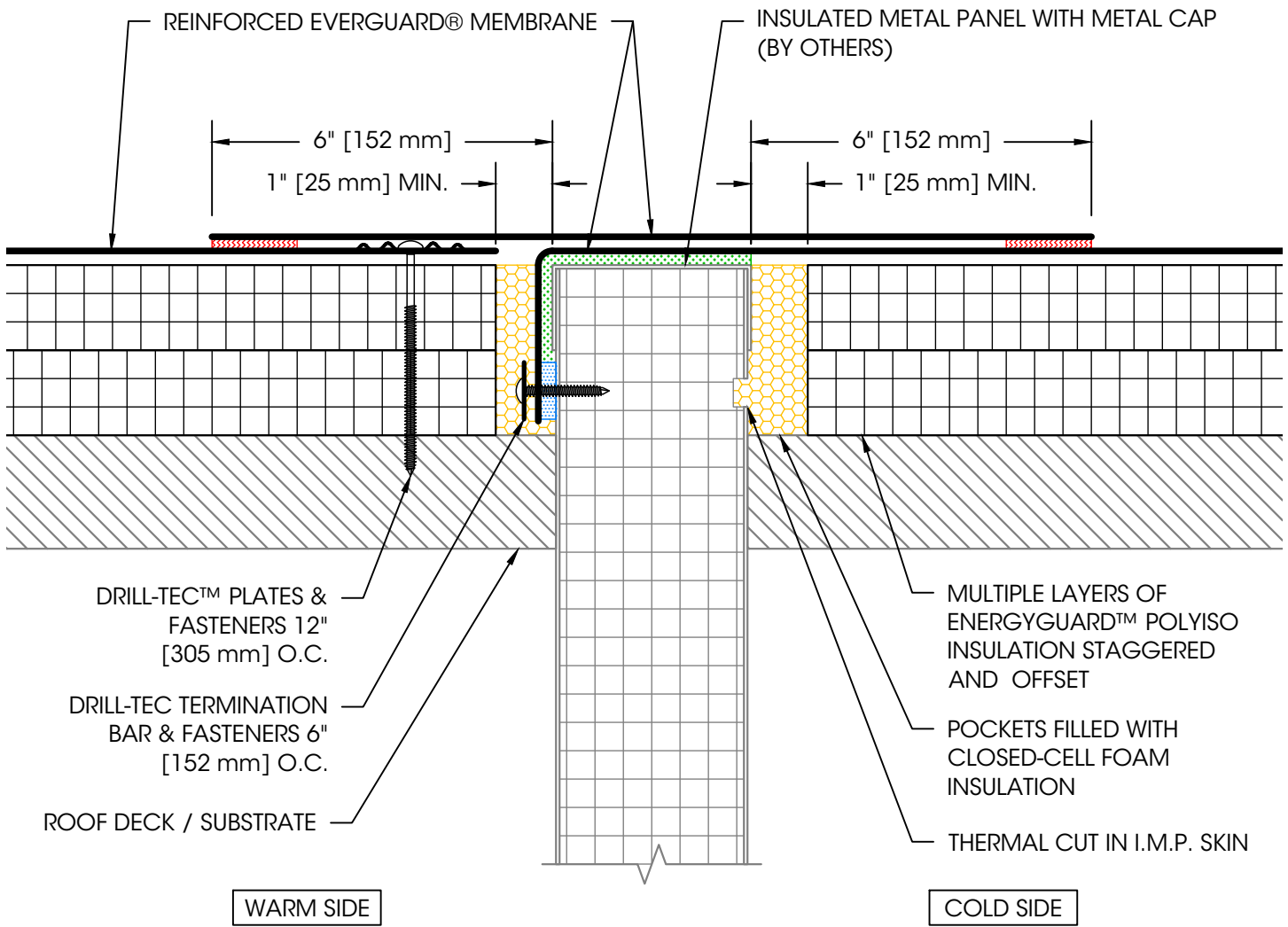
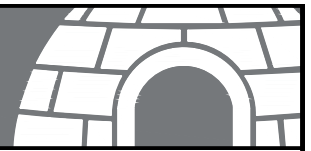
1. For steel roof decks: Fill steel deck flutes with closed cell spray foam insulation prior to the installation of above deck insulation a minimum of 12" [305 mm] from face of wall on each side.

LEGEND	
	HEAT WELD
	ADHESIVE
	SEALANT

Transition Tie-In - Wall Above Roof Deck

Roof Area: Field of Roof	
Issue Date: 11/13/2023	Scale: N.T.S.

Detail No:
130A



Notes:

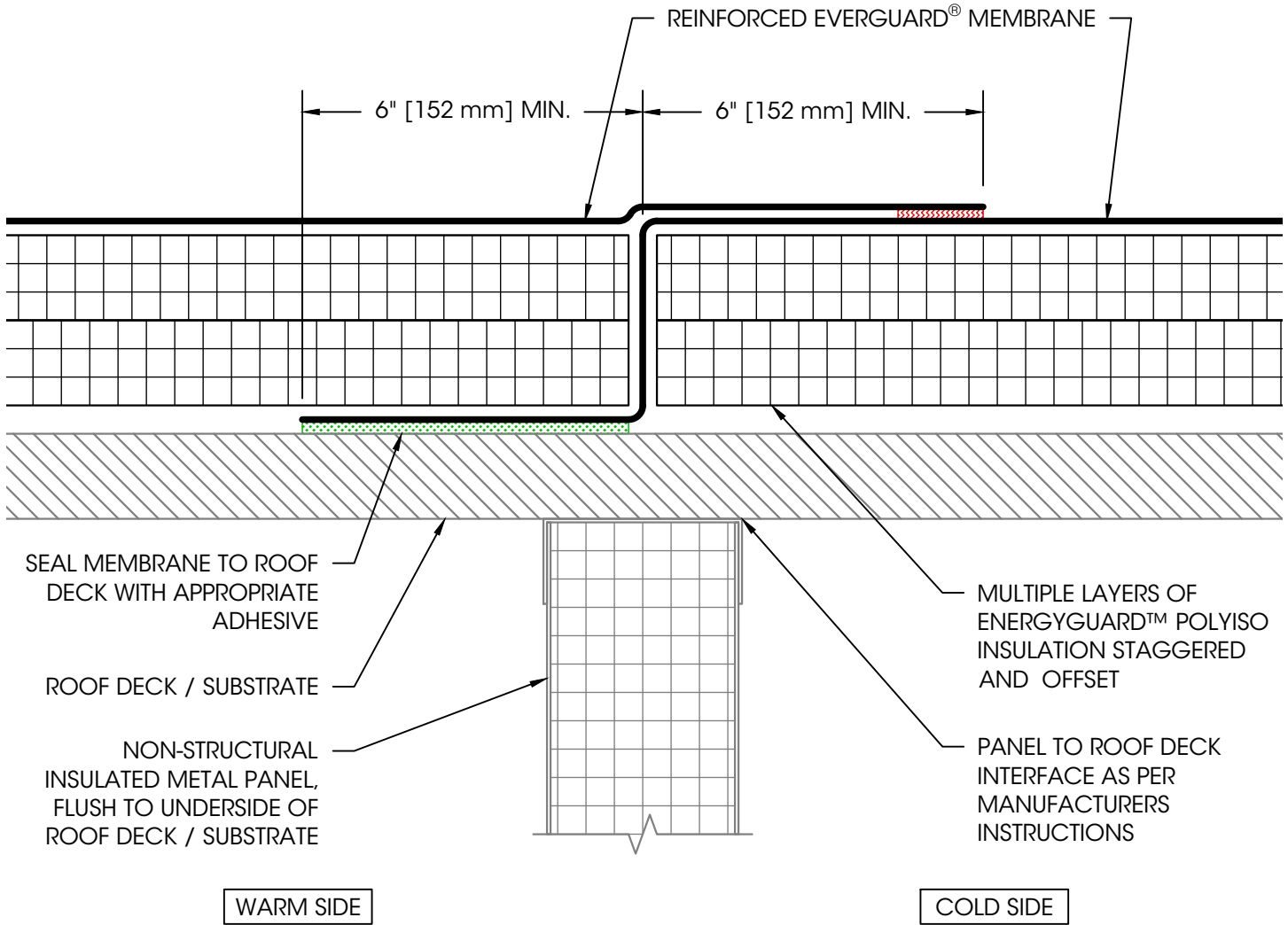
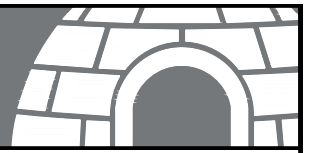
1. For steel roof decks: Fill steel deck flutes with closed cell spray foam insulation prior to the installation of above deck insulation a minimum of 12" [305 mm] from face of wall on each side.

LEGEND	
	HEAT WELD
	ADHESIVE
	SEALANT

Transition Tie-In at I.M.P. Above Deck

Roof Area: Field of Roof	
Issue Date: 11/13/2023	Scale: N.T.S.

Detail No:
130B



SEAL MEMBRANE TO ROOF DECK WITH APPROPRIATE ADHESIVE

ROOF DECK / SUBSTRATE

NON-STRUCTURAL INSULATED METAL PANEL, FLUSH TO UNDERSIDE OF ROOF DECK / SUBSTRATE

MULTIPLE LAYERS OF ENERGYGUARD™ POLYISO INSULATION STAGGERED AND OFFSET

PANEL TO ROOF DECK INTERFACE AS PER MANUFACTURERS INSTRUCTIONS

WARM SIDE

COLD SIDE

Notes:

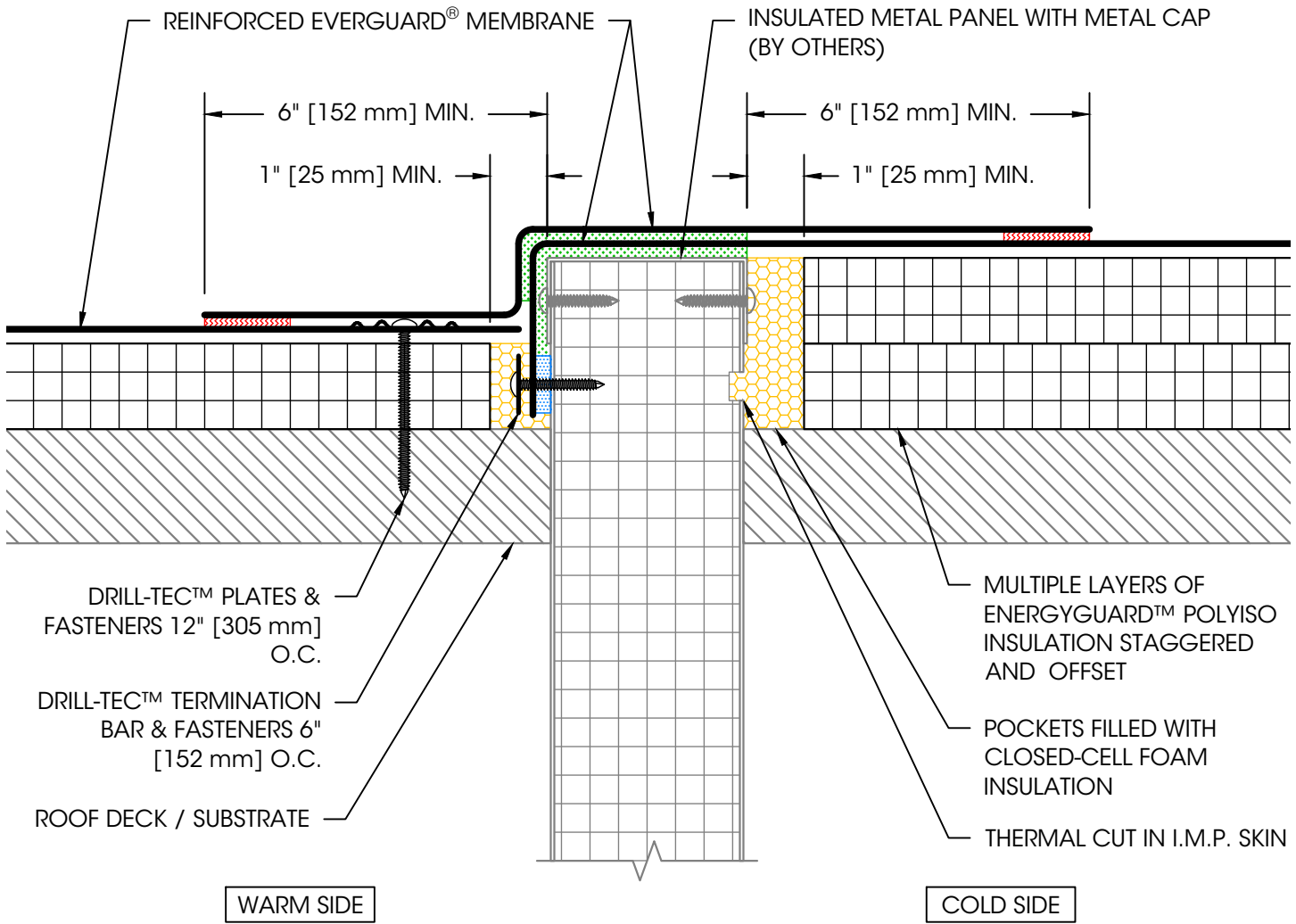
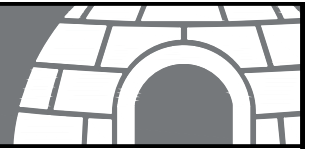
1. For steel roof decks: Fill topside of steel deck flutes with closed cell spray foam insulation prior to the installation of above deck insulation a minimum of 12" [305 mm] from face of wall on each side, both sides of wall.
2. Air seal wall-to-underside of roof deck interface as per architectural drawings.

LEGEND	
	HEAT WELD
	ADHESIVE

**Transition Tie-In at I.M.P
Below Deck**

Roof Area: Field of Roof	
Issue Date: 11/13/2023	Scale: N.T.S.

Detail No:
130C



Notes:

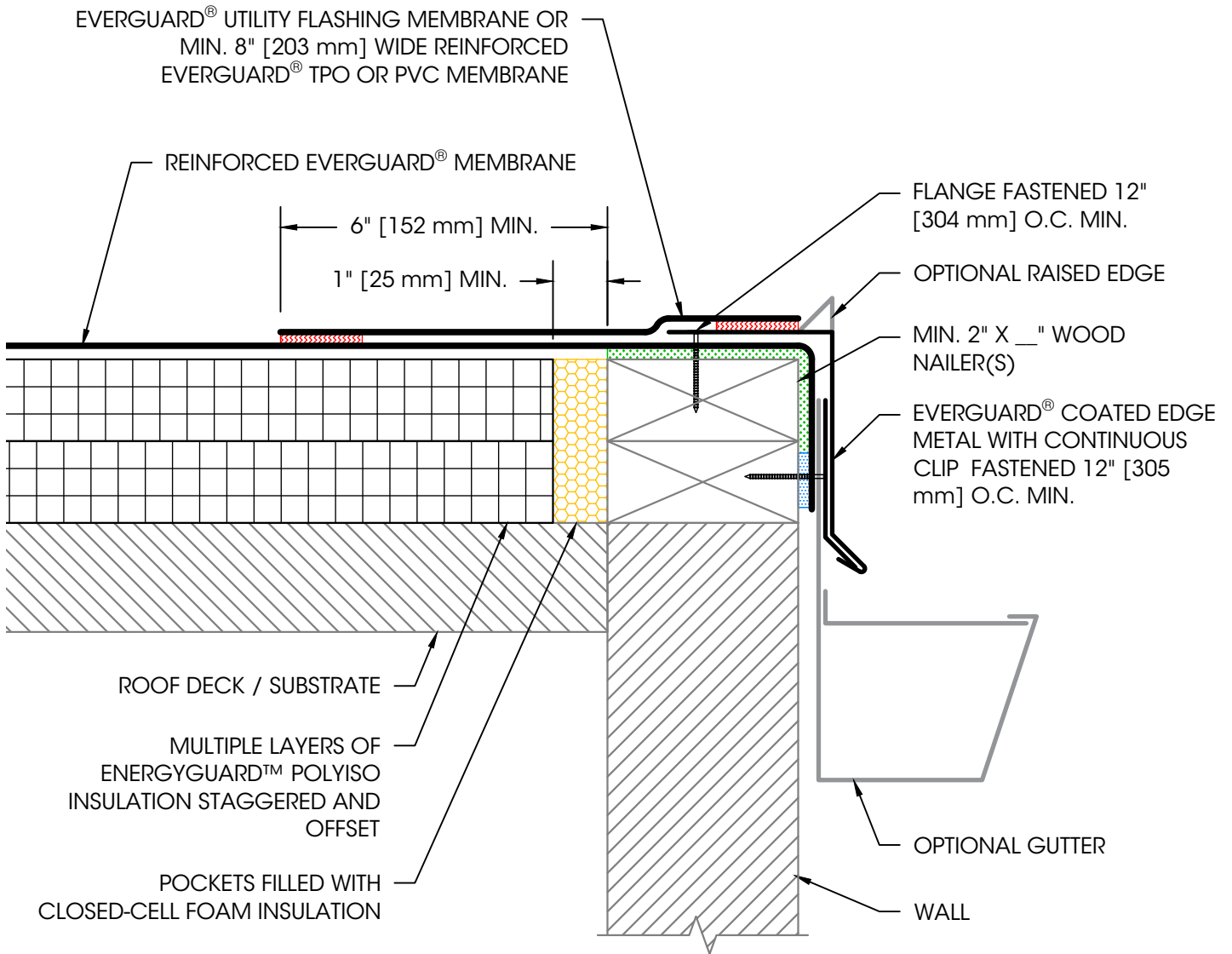
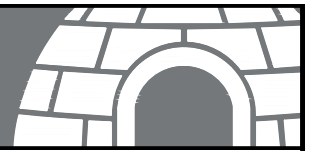
1. For steel roof decks: Fill steel deck flutes with closed cell spray foam insulation prior to the installation of above deck insulation a minimum of 12" [305 mm] from face of wall on each side.

LEGEND	
	HEAT WELD
	ADHESIVE
	SEALANT

Offset Transition Tie-In at I.M.P Above Deck

Roof Area: Field of Roof	
Issue Date: 11/13/2023	Scale: N.T.S.

Detail No:
130D



Notes:

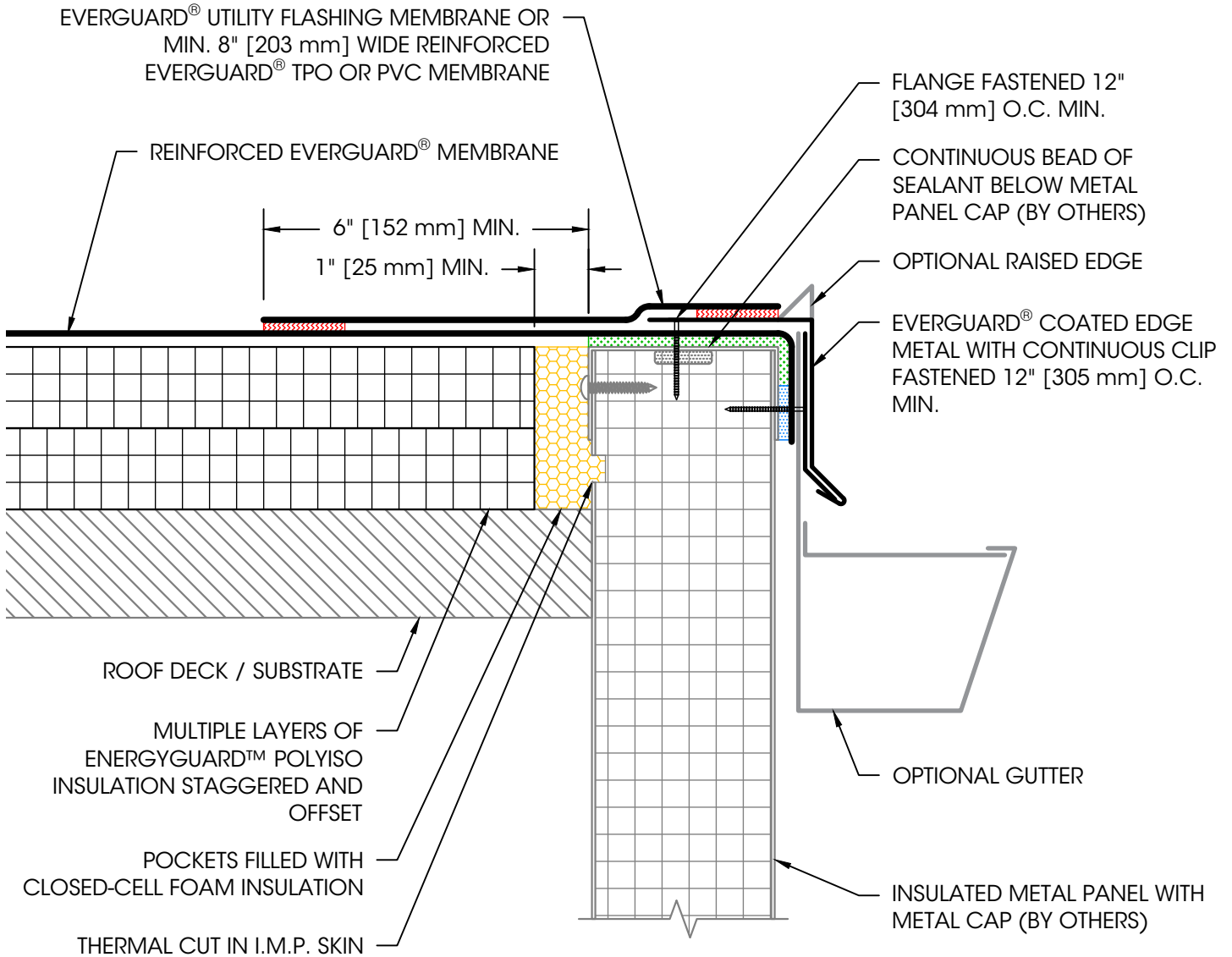
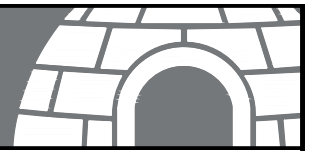
1. Edge metal should be designed for wind resistance in accordance with the applicable edition of ASCE 7 and tested for capacity in accordance with the test methods in the applicable edition of ANSI/SPRI ES-1.
2. For steel roof decks: Fill steel deck flutes with closed cell spray foam insulation prior to the installation of above deck insulation a minimum of 12" [305 mm] from face of wall on each side.

LEGEND	
	HEAT WELD
	ADHESIVE
	SEALANT

Coated Metal Roof Edge

Roof Area: Roof Edge	
Issue Date: 11/13/2023	Scale: N.T.S.

Detail No:
201A



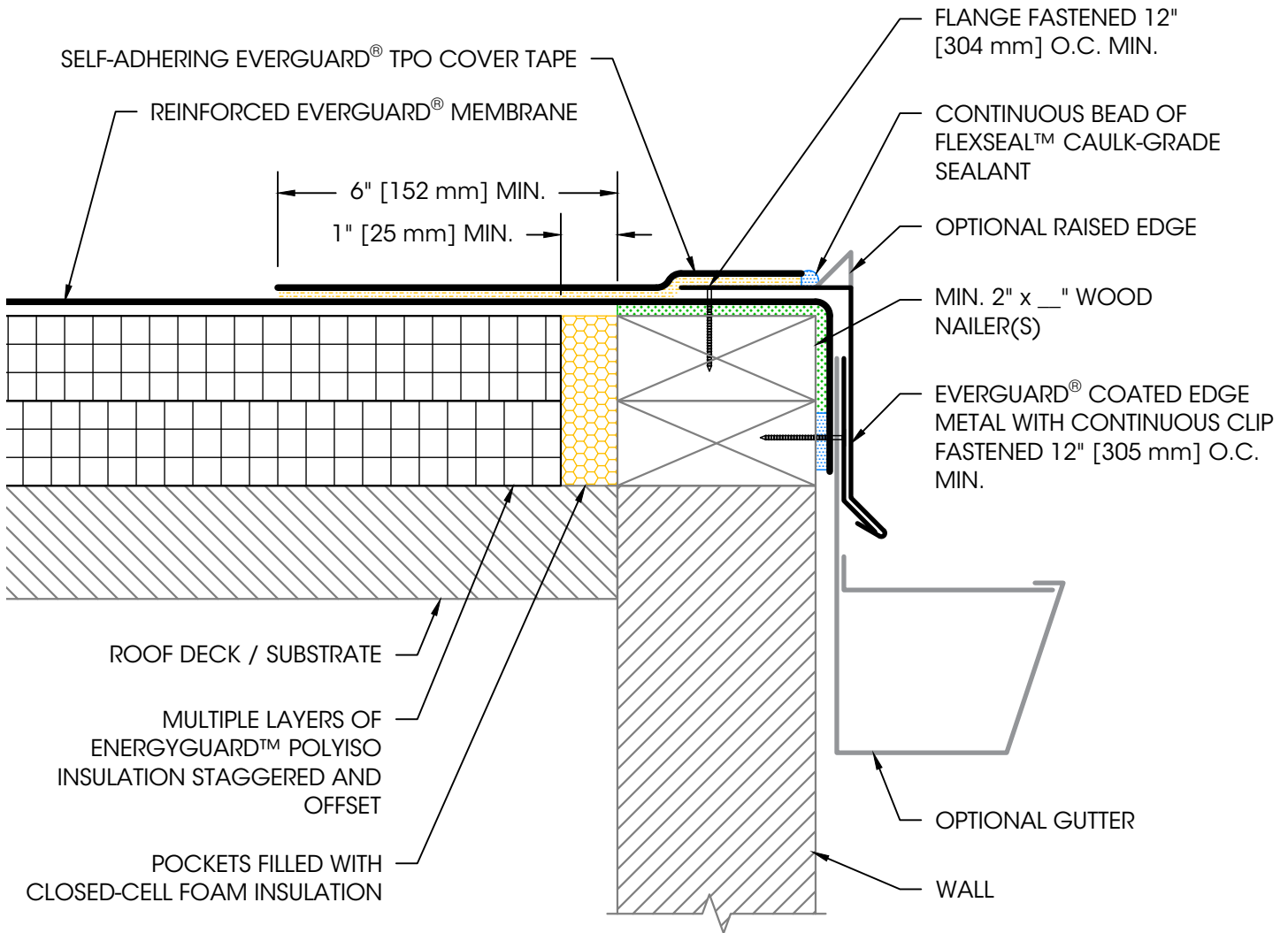
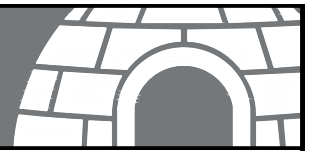
Notes:

1. Edge metal should be designed for wind resistance in accordance with the applicable edition of ASCE 7. Additional requirements apply for guarantee coverage of attachment to insulated metal wall panels. Contact coldstorage.assistance@gaf.com for details.
2. For steel roof decks: Fill steel deck flutes with closed cell spray foam insulation prior to the installation of above deck insulation a minimum of 12" [305 mm] from face of wall on each side.

LEGEND	
	HEAT WELD
	ADHESIVE
	SEALANT

Coated Metal Roof Edge at I.M.P. Wall

Roof Area: Roof Edge		Detail No:
Issue Date: 11/13/2023	Scale: N.T.S.	201C



Notes:

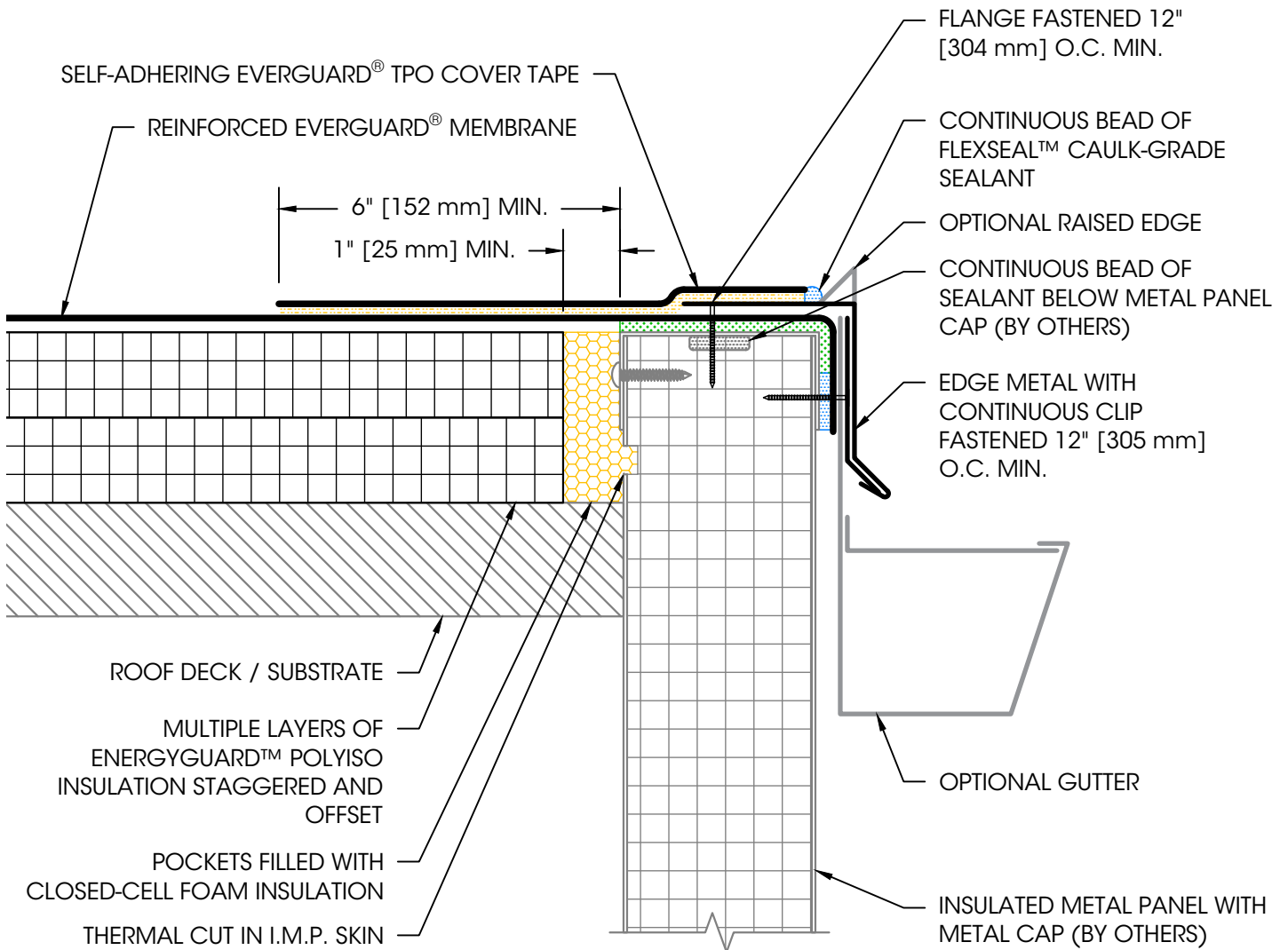
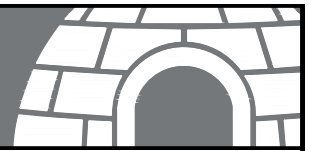
1. Clean metal and membrane with EverGuard® TPO Seam Cleaner and allow to dry. Once dry, prime metal and membrane with EverGuard® TPO Primer before installing EverGuard® TPO Cover Tape.
2. Edge metal should be designed for wind resistance in accordance with the applicable edition of ASCE 7 and tested for capacity in accordance with the test methods in the applicable edition of ANSI/SPRI ES-1.
3. For steel roof decks: Fill steel deck flutes with closed cell spray foam insulation prior to the installation of above deck insulation a minimum of 12" [305 mm] from face of wall on each side.

LEGEND	
	ADHESIVE
	SEALANT
	PRIMER

Metal Roof Edge with Cover Tape

Roof Area: Roof Edge	
Issue Date: 11/13/2023	Scale: N.T.S.

Detail No:
202C



Notes:

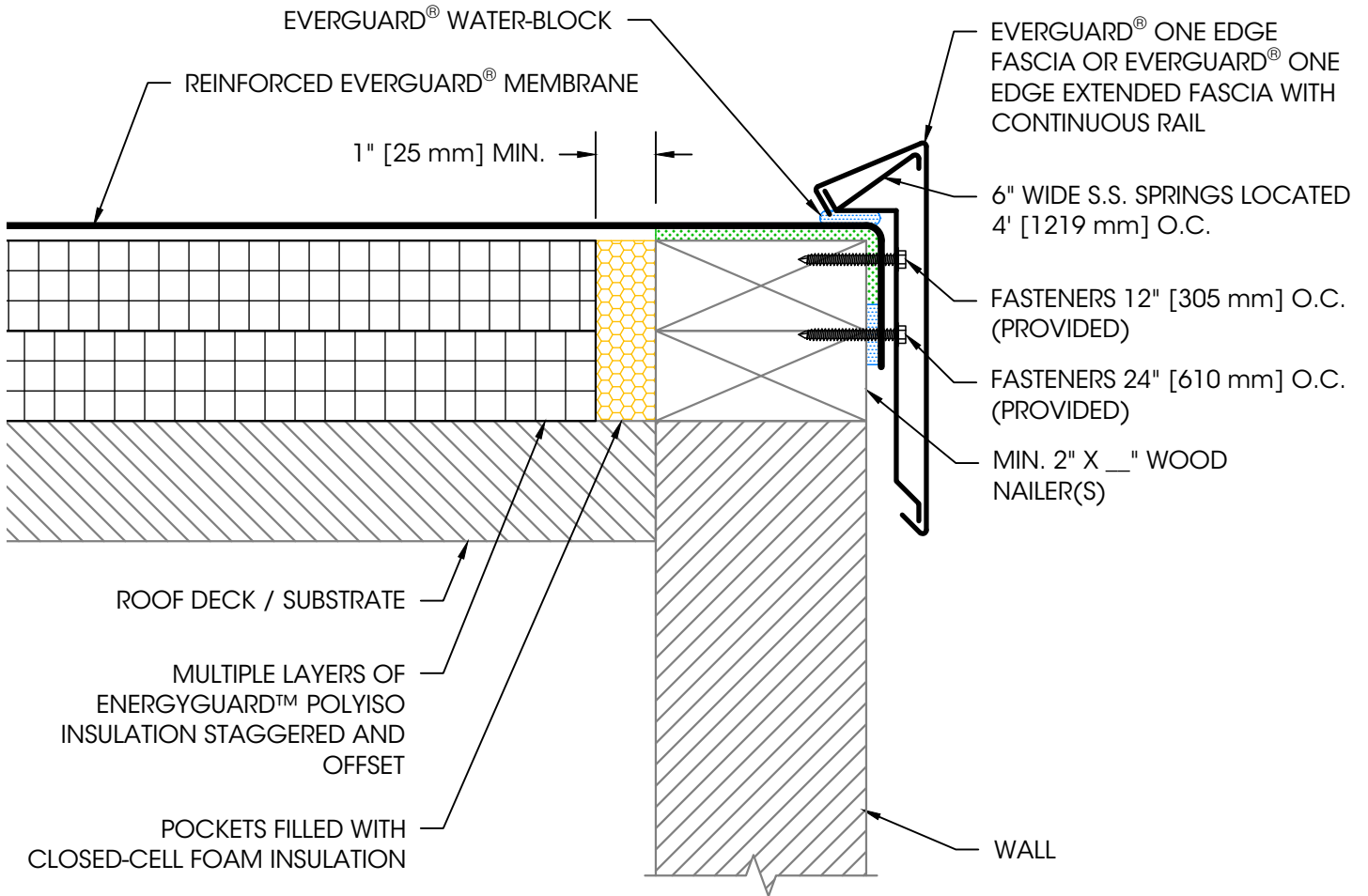
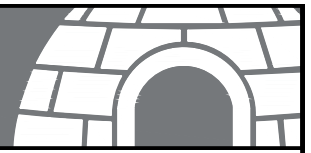
1. Clean metal and membrane with EverGuard® TPO Seam Cleaner and allow to dry. Once dry, prime metal and membrane with EverGuard® TPO Primer before installing EverGuard® TPO Cover Tape.
2. Edge metal should be designed for wind resistance in accordance with the applicable edition of ASCE 7. Additional requirements apply for guarantee coverage of attachment to insulated metal wall panels. Contact coldstorage.assistance@gaf.com for details.
3. For steel roof decks: Fill steel deck flutes with closed cell spray foam insulation prior to the installation of above deck insulation a minimum of 12" [305 mm] from face of wall.

LEGEND	
	ADHESIVE
	SEALANT
	PRIMER

Metal Roof Edge with Cover Tape at I.M.P. Wall

Roof Area: Roof Edge	
Issue Date: 11/13/2023	Scale: N.T.S.

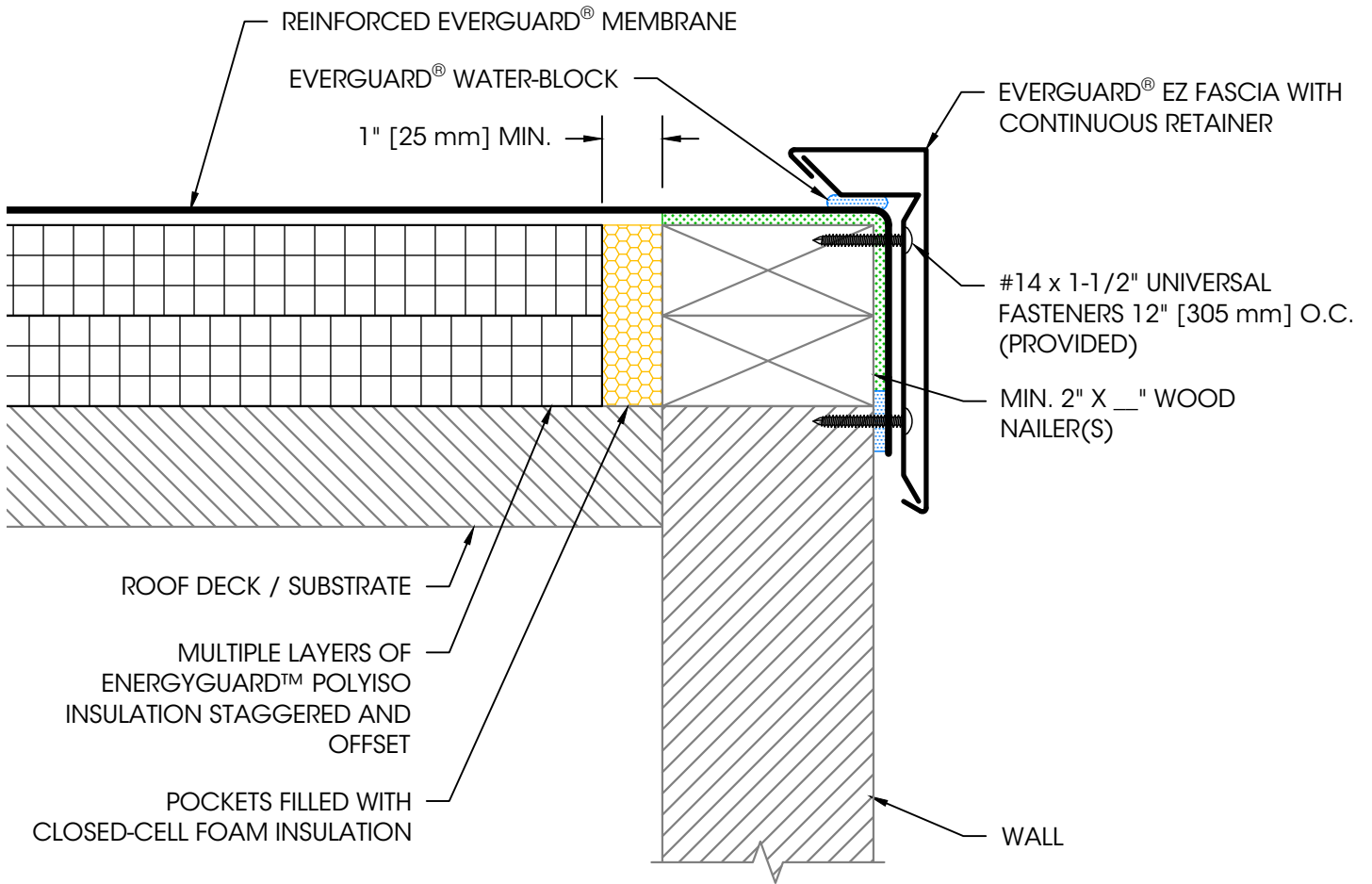
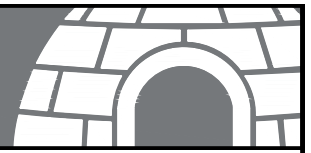
Detail No:
203D



Notes:

1. Edge metal should be designed for wind resistance in accordance with the applicable edition of ASCE 7 and tested for capacity in accordance with the test methods in the applicable edition of ANSI/SPRI ES-1.
2. For steel roof decks: Fill steel deck flutes with closed cell spray foam insulation prior to the installation of above deck insulation a minimum of 12" [305 mm] from face of wall.

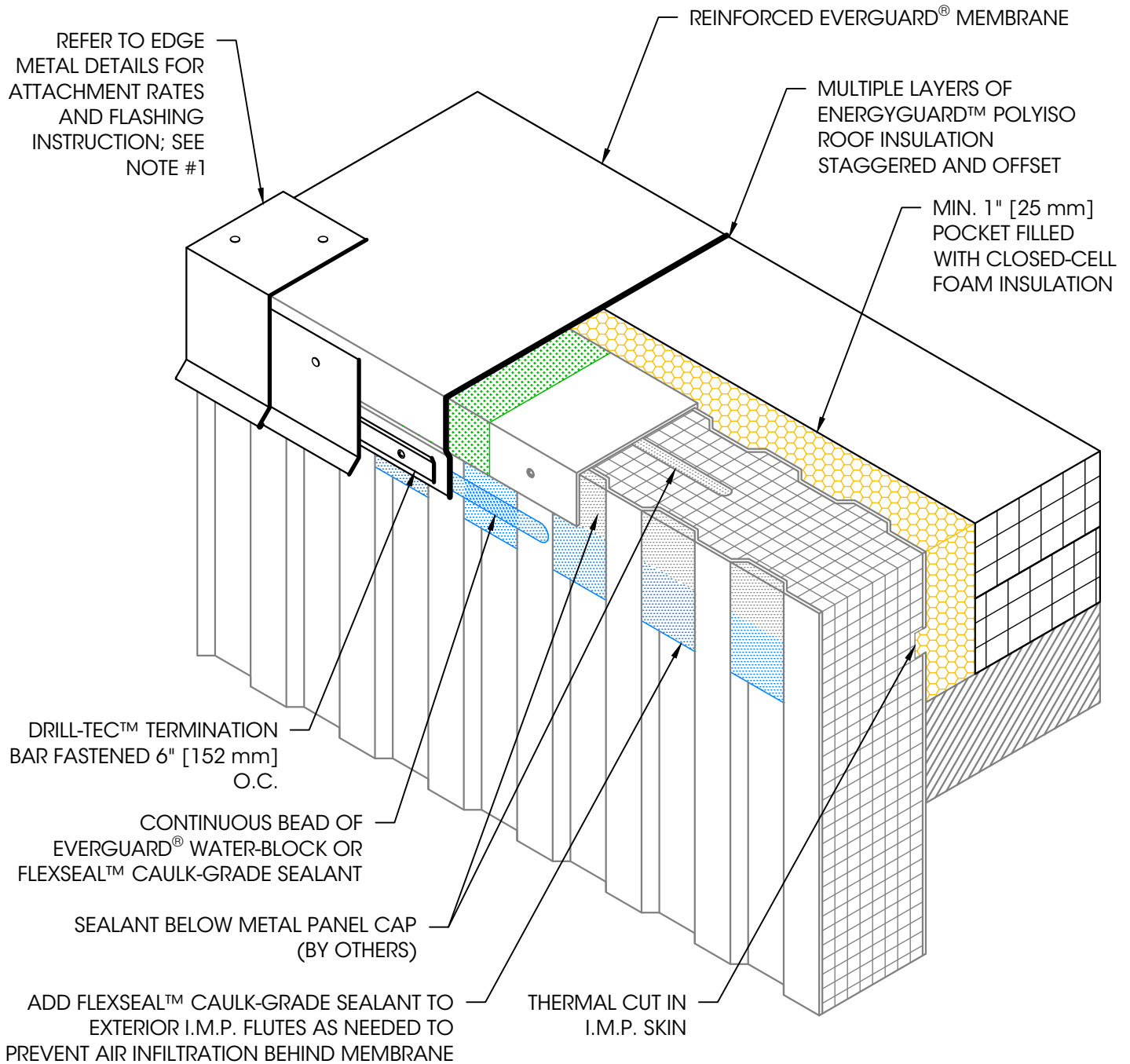
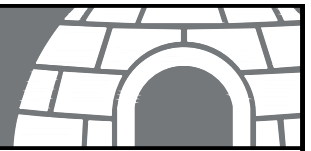
LEGEND		EverGuard One Edge Fascia	Roof Area:	Detail No:
	ADHESIVE		Roof Edge	
	SEALANT	Issue Date:	Scale:	
		11/13/2023	N.T.S.	



Notes:

1. Edge metal should be designed for wind resistance in accordance with the applicable edition of ASCE 7 and tested for capacity in accordance with the test methods in the applicable edition of ANSI/SPRI ES-1.
2. For steel roof decks: Fill steel deck flutes with closed cell spray foam insulation prior to the installation of above deck insulation a minimum of 12" [305 mm] from face of wall.

LEGEND		EverGuard EZ Fascia		Roof Area:		Detail No:	
	ADHESIVE			Roof Edge		232E	
	SEALANT	Issue Date:		Scale:			
		11/13/2023		N.T.S.			



Notes:

1. Edge metal should be designed for wind resistance in accordance with the applicable edition of ASCE 7. Additional requirements apply for guarantee coverage of attachment to insulated metal wall panels. Contact coldstorage.assistance@gaf.com for details.
2. For steel roof decks: Fill steel deck flutes with closed cell spray foam insulation prior to the installation of above deck insulation a minimum of 12" [305 mm] from face of wall.

LEGEND

	ADHESIVE
	SEALANT

Preparation of I.M.P. Walls for Edge Termination

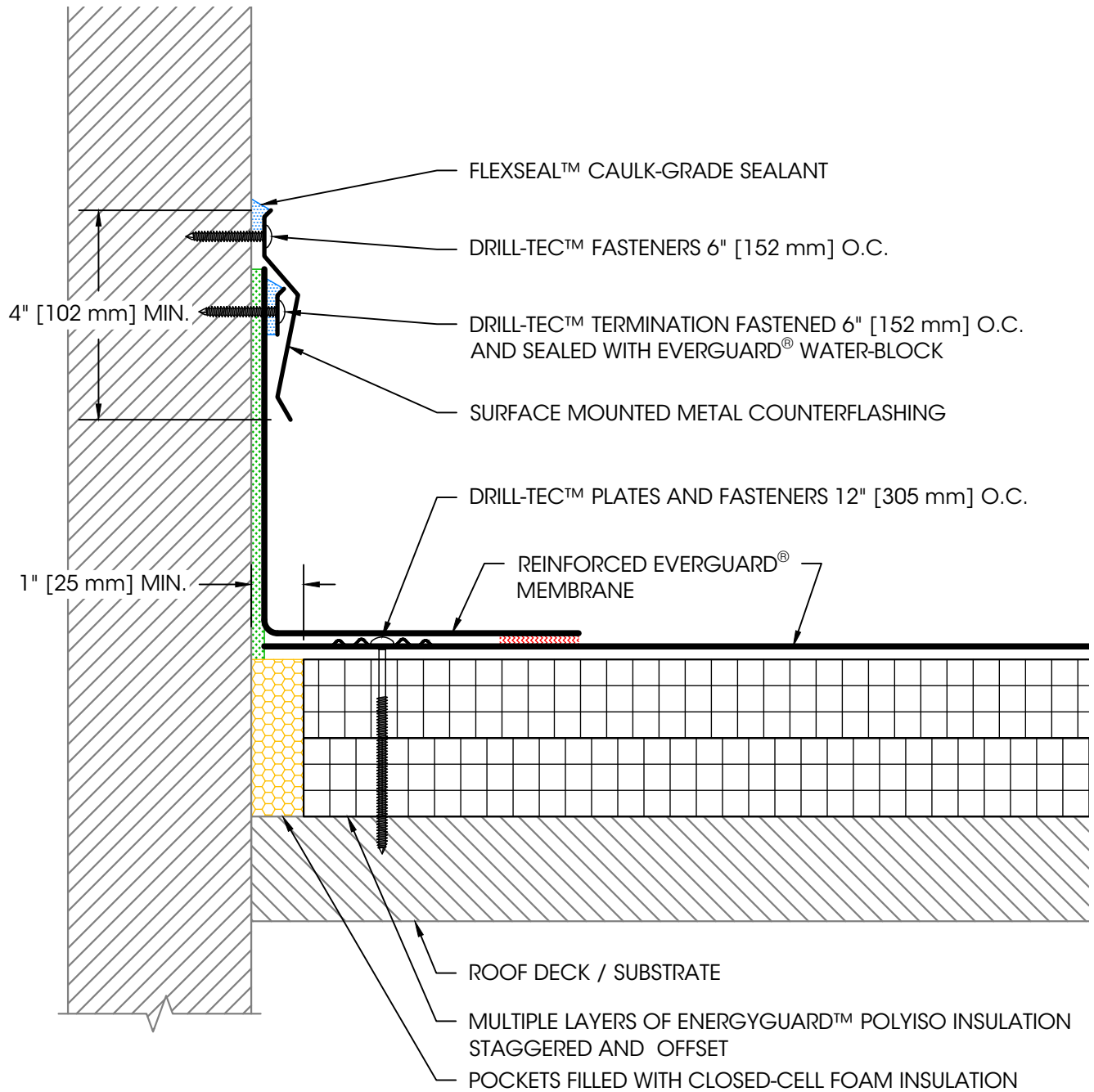
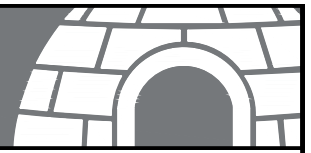
Roof Area:
Field of Roof

Detail No:

Issue Date:
11/13/2023

Scale:
N.T.S.

237



Notes:

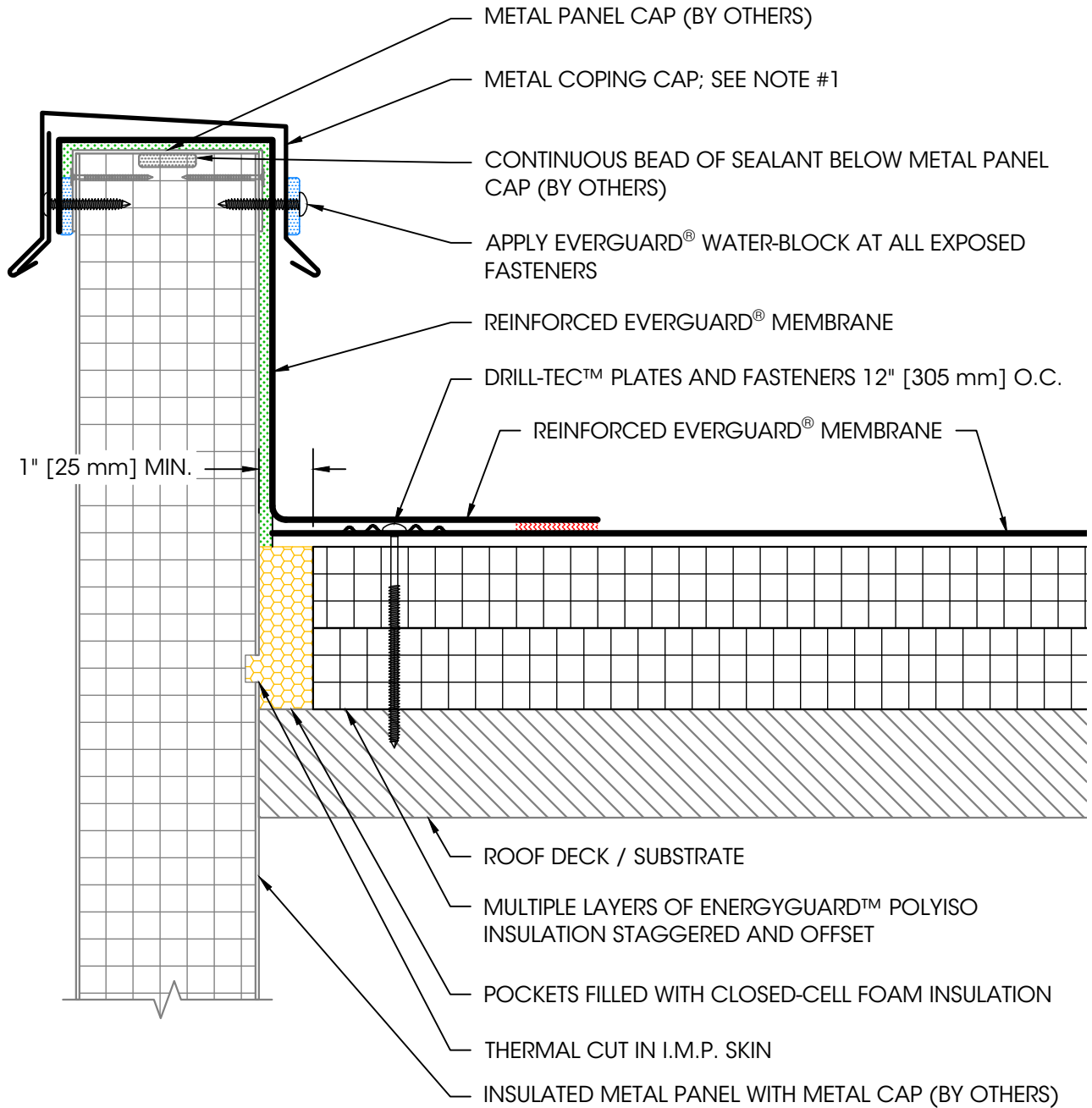
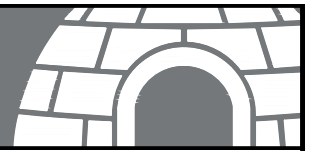
1. Exposed walls and curbs must be waterproofed and maintained above the base flashing in order for any surface mounted termination to be effective.
2. For steel roof decks: Fill steel deck flutes with closed cell spray foam insulation prior to the installation of above deck insulation a minimum of 12" [305 mm] from face of wall on each side.

LEGEND	
	HEAT WELD
	ADHESIVE
	SEALANT

Wall Flashing with Surface Mounted Counterflashing

Roof Area: Walls & Curbs	
Issue Date: 11/13/2023	Scale: N.T.S.

Detail No:
301B



Notes:

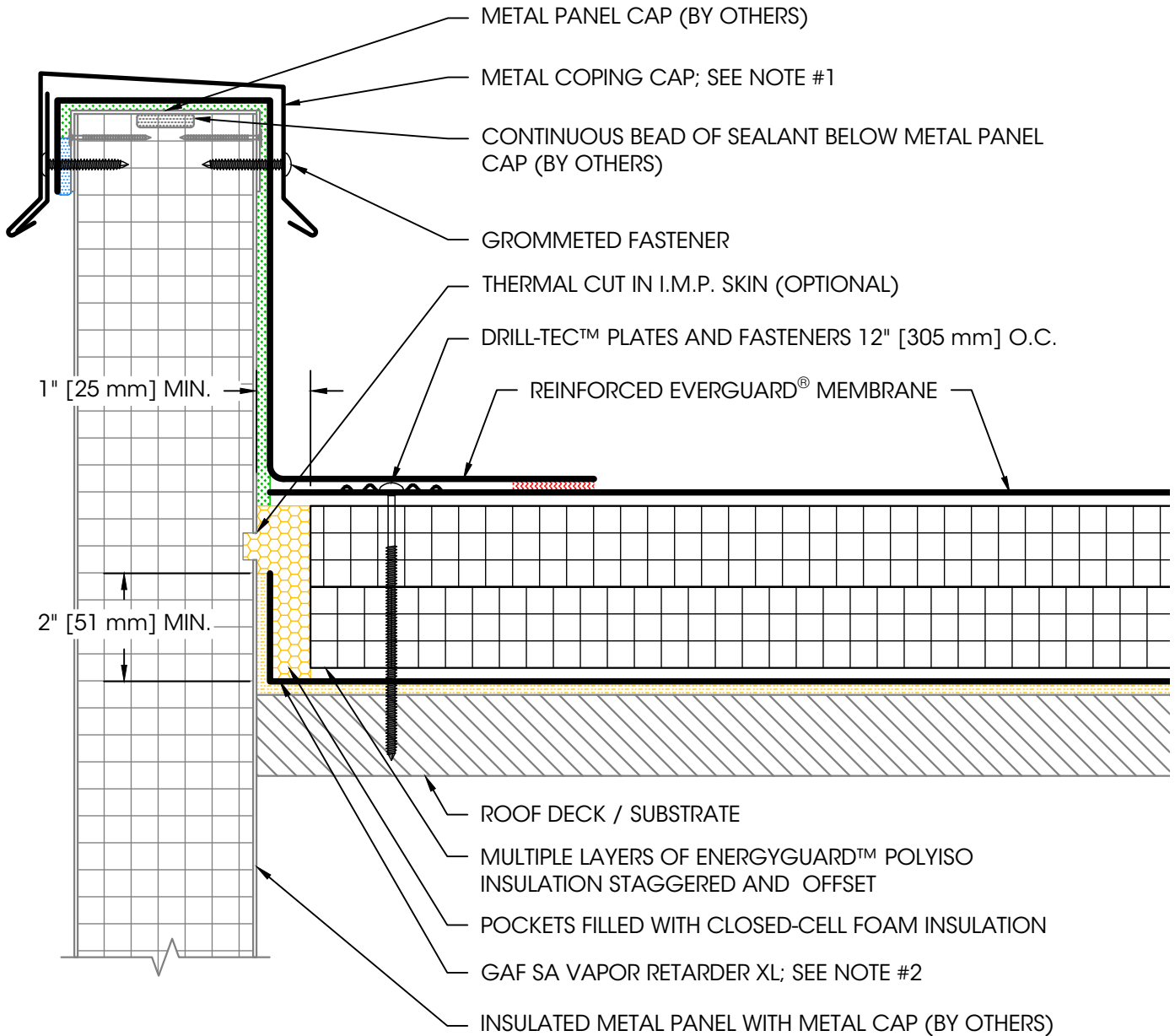
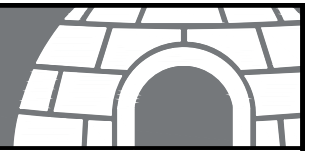
1. Edge metal should be designed for wind resistance in accordance with the applicable edition of ASCE 7. Additional requirements apply for guarantee coverage of attachment to insulated metal wall panels. Contact coldstorage.assistance@gaf.com for details.
2. For steel roof decks: Fill steel deck flutes with closed cell spray foam insulation prior to the installation of above deck insulation a minimum of 12" [305 mm] from face of wall on each side.

LEGEND	
	HEAT WELD
	ADHESIVE
	SEALANT

I.M.P. Parapet Wall with Coping Cap

Roof Area: Walls & Curbs	
Issue Date: 11/13/2023	Scale: N.T.S.

Detail No:
303B



Notes:

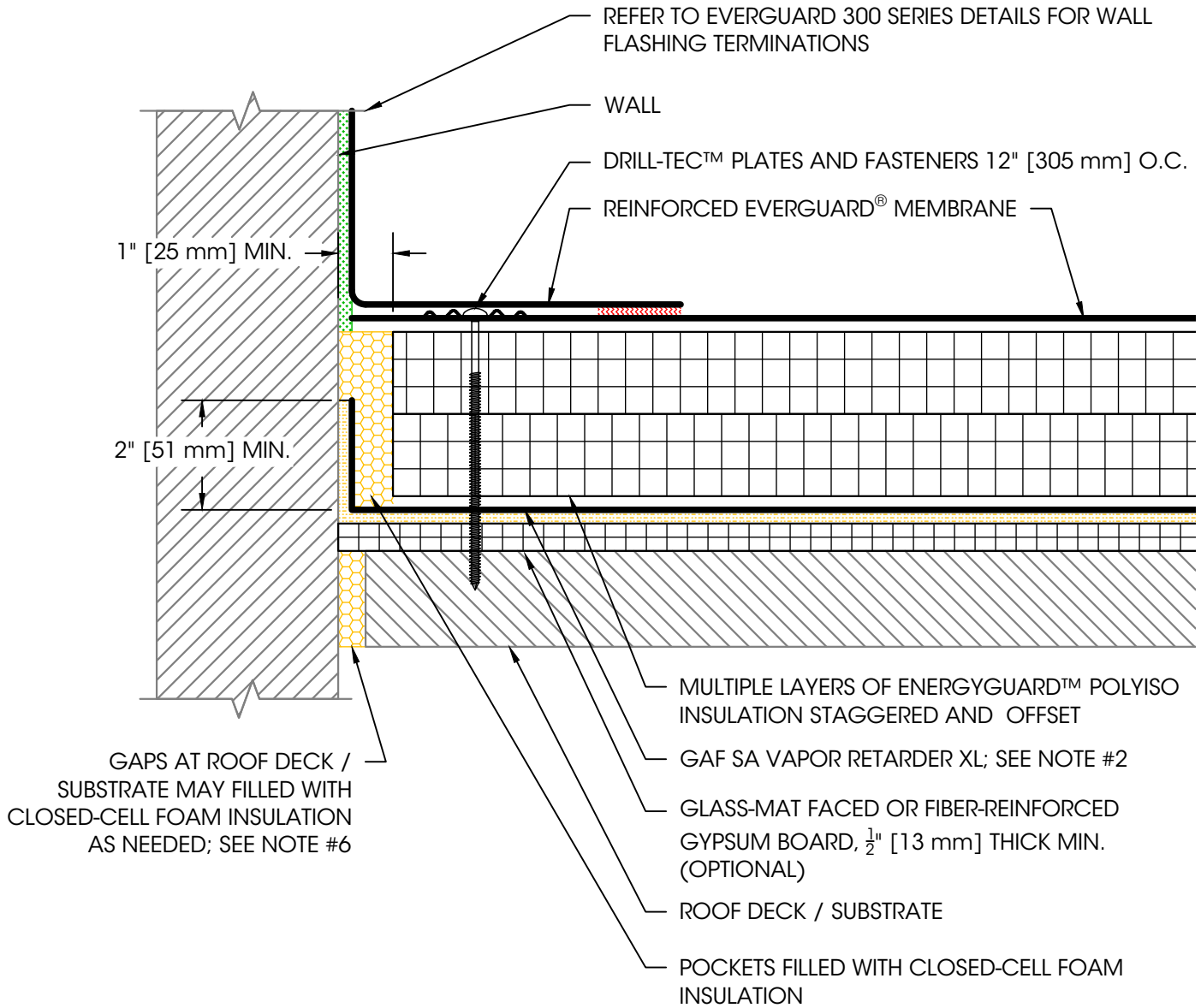
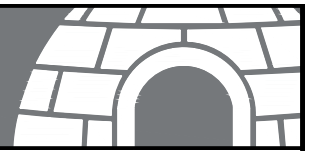
1. Edge metal should be designed for wind resistance in accordance with the applicable edition of ASCE 7. Additional requirements apply for guarantee coverage of attachment to insulated metal wall panels. Contact coldstorage.assistance@gaf.com for details.
2. A vapor retarder may be used at the deck level if there are concerns with potential moisture issues due to certain construction processes or other sources during building use.
3. Refer to GAF SA Primer installation instructions for general guidelines.
4. Maintain separation between vapor retarder and membrane / adhesive to avoid potential incompatibility issues.
5. For steel roof decks: Fill steel deck flutes with closed cell spray foam insulation prior to the installation of above deck insulation a minimum of 12" [305 mm] from face of wall on each side.

LEGEND	
	HEAT WELD
	ADHESIVE
	SEALANT
	PRIMER

I.M.P. Wall with Coping Cap & SA Vapor Retarder

Roof Area: Walls & Curbs	
Issue Date: 11/13/2023	Scale: N.T.S.

Detail No:
303C



Notes:

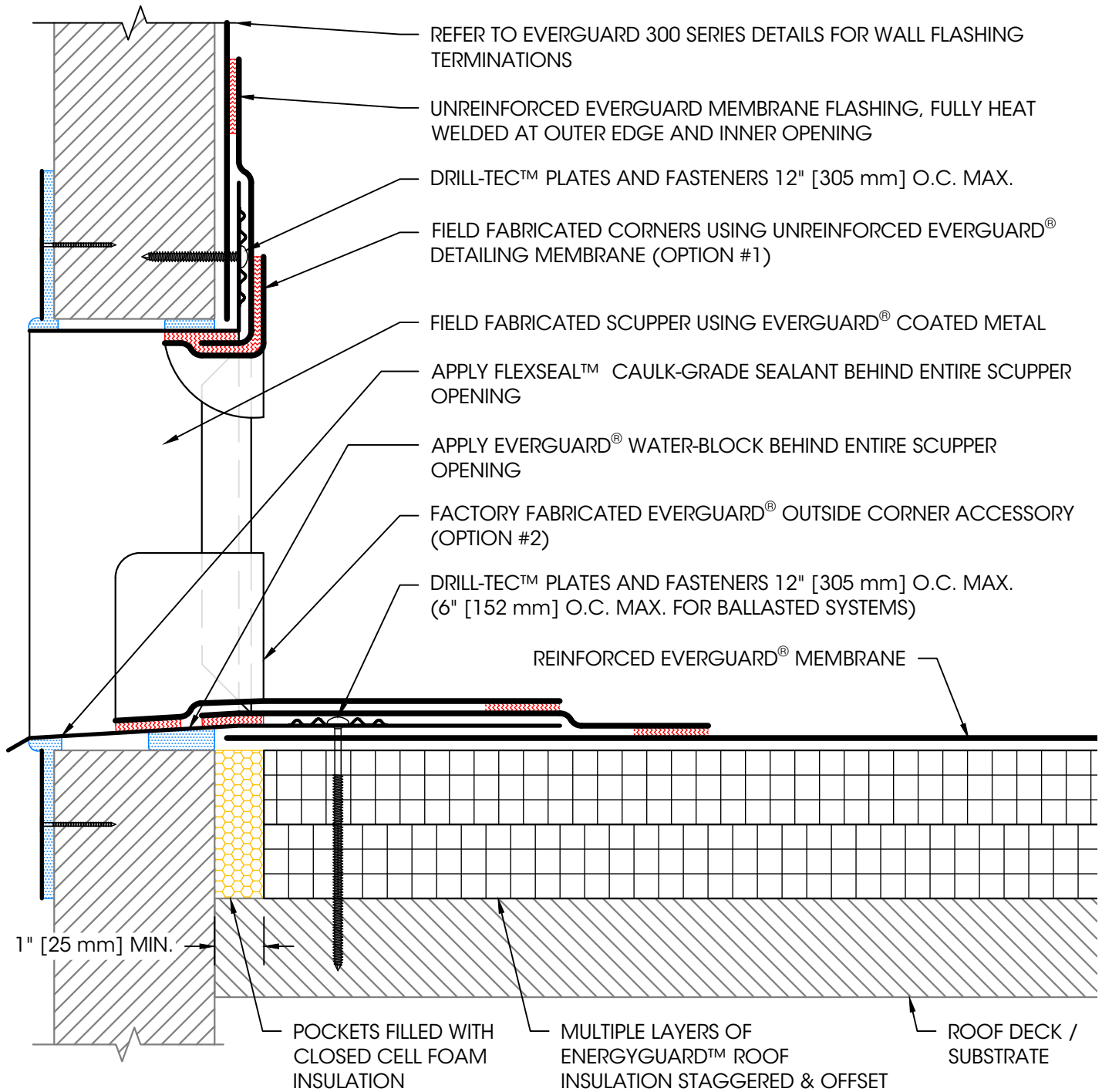
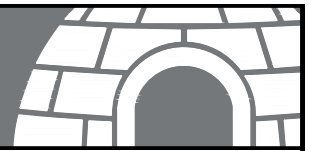
1. Use detail in conjunction with the standard flashing and termination details for the approved roof system.
2. A vapor retarder may be used at the deck level if there are concerns with potential moisture issues due to certain construction processes or other sources during building use.
3. Refer to GAF SA Primer installation instructions for general guidelines.
4. Maintain separation between vapor retarder and membrane / adhesive to avoid potential incompatibility issues.
5. For steel roof decks: Fill steel deck flutes with closed cell spray foam insulation prior to the installation of above deck insulation a minimum of 12" [305 mm] from face of wall on each side.
6. Wall to roof deck interface must be fully air sealed.

LEGEND	
	HEAT WELD
	ADHESIVE
	PRIMER

SA Vapor Retarder Termination at Wall

Roof Area: Walls & Curbs	
Issue Date: 11/13/2023	Scale: N.T.S.

Detail No:
309



Notes:

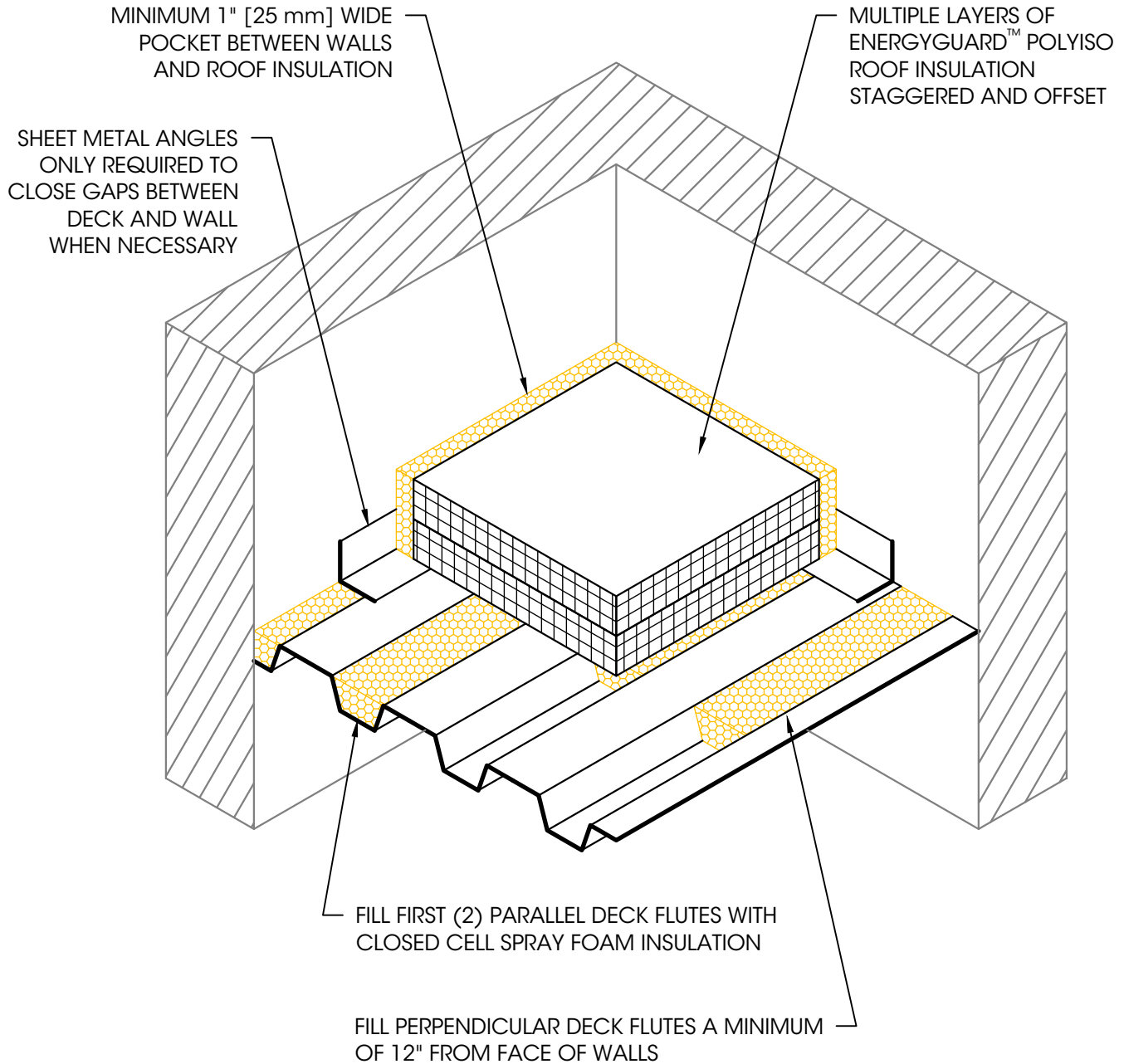
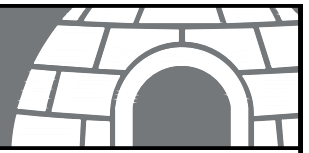
1. For steel roof decks: Fill steel deck flutes with closed cell spray foam insulation prior to the installation of above deck insulation a minimum of 12" [305 mm] from face of wall on each side.
2. All (4) roof-side corners of scupper must be completely sealed using EverGuard® Unreinforced Detailing Membrane or EverGuard® Preformed Corner accessories.
3. Scupper must be sealed off on exterior face of building.

LEGEND	
	HEAT WELD
	SEALANT

Field Fabricated Coated Metal Scupper

Roof Area: Walls & Curbs	
Issue Date: 11/13/2023	Scale: N.T.S.

Detail No:
311A



Air Seal at Interface of Steel Deck and Wall

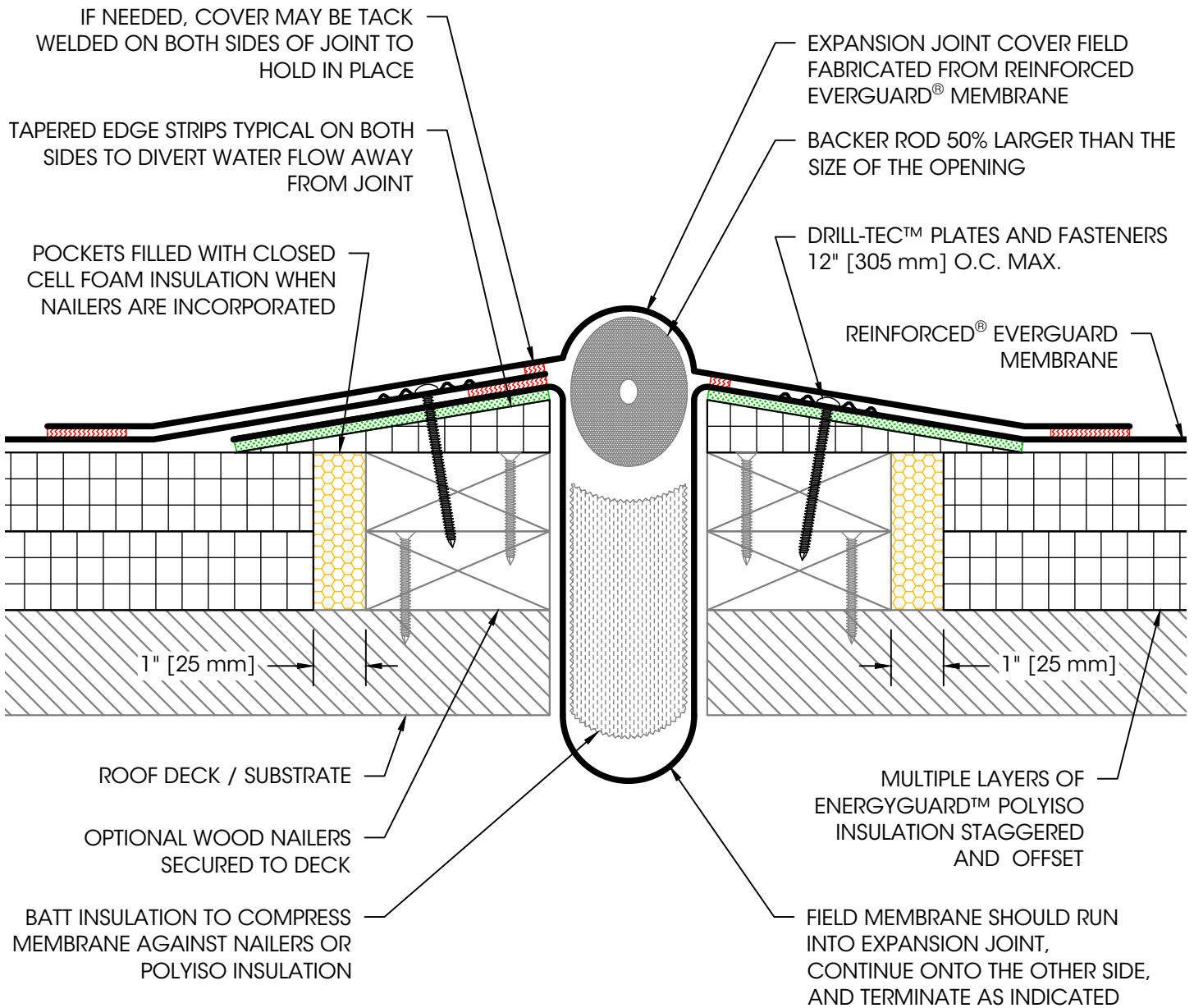
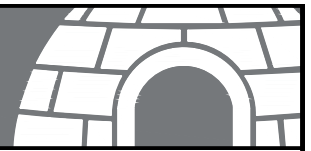
Roof Area:
Walls & Curbs

Issue Date:
11/13/2023

Scale:
1' = 1-1/2"

Detail No:

350



Notes:

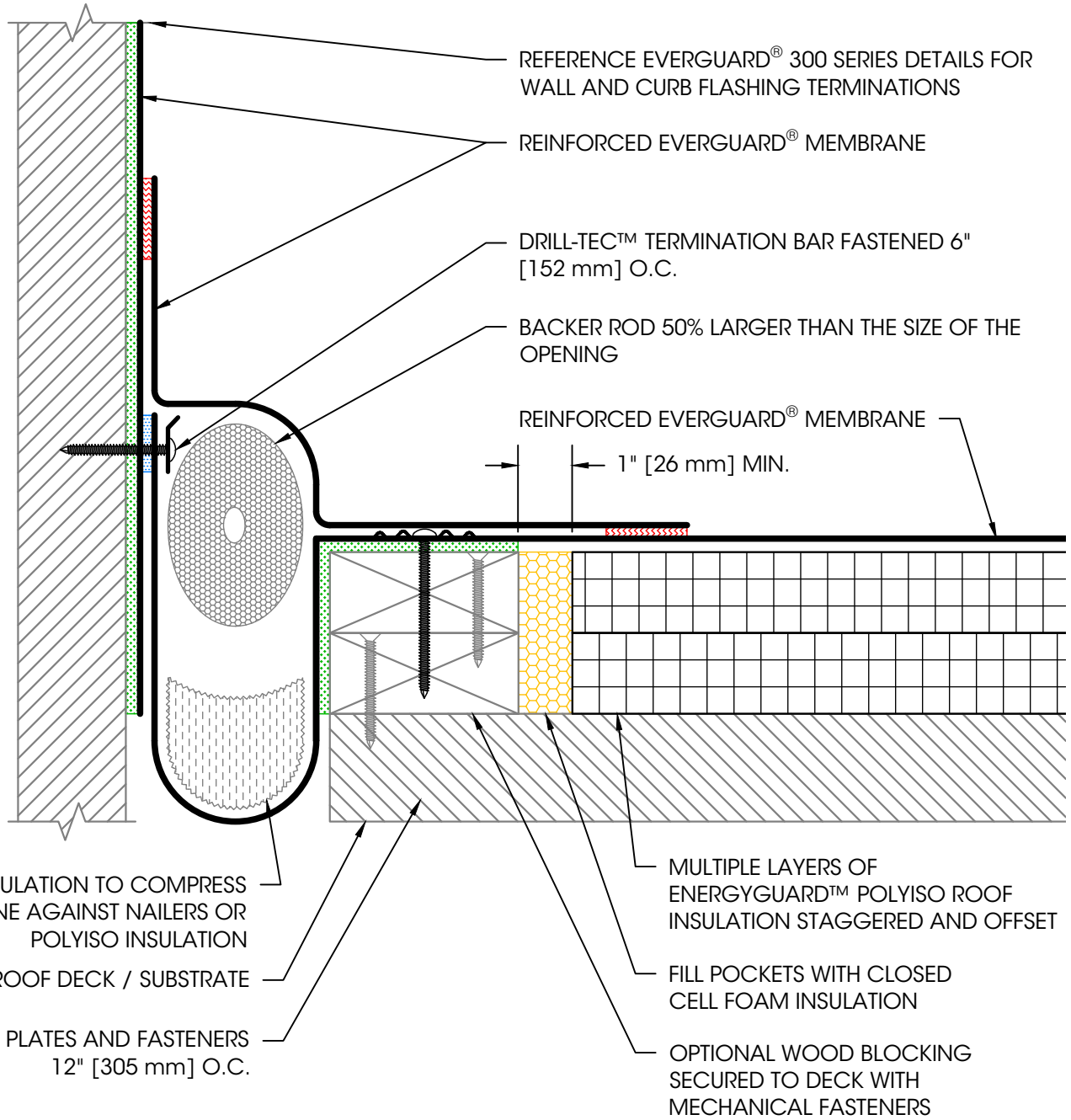
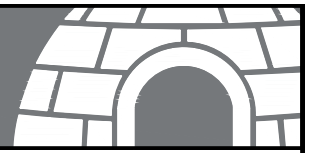
1. For steel roof decks: Fill steel deck flutes with closed cell spray foam insulation prior to the installation of above deck insulation a minimum of 12" [305 mm] from face of wall on each side.

LEGEND	
	HEAT WELD
	ADHESIVE

Field Fabricated Expansion Joint - Flat Type

Roof Area: Expansion Joints	
Issue Date: 11/13/2023	Scale: N.T.S.

Detail No:
401D



Notes:

1. For steel roof decks: Fill topside of steel deck flutes with closed cell spray foam insulation prior to the installation of above deck insulation a minimum of 12" [305 mm] from either edge of expansion joint
2. Expansion joints should be fabricated using smooth backed membrane only.

LEGEND

	HEAT WELD
	ADHESIVE
	SEALANT

Field Fabricated Wall to Deck Expansion Joint

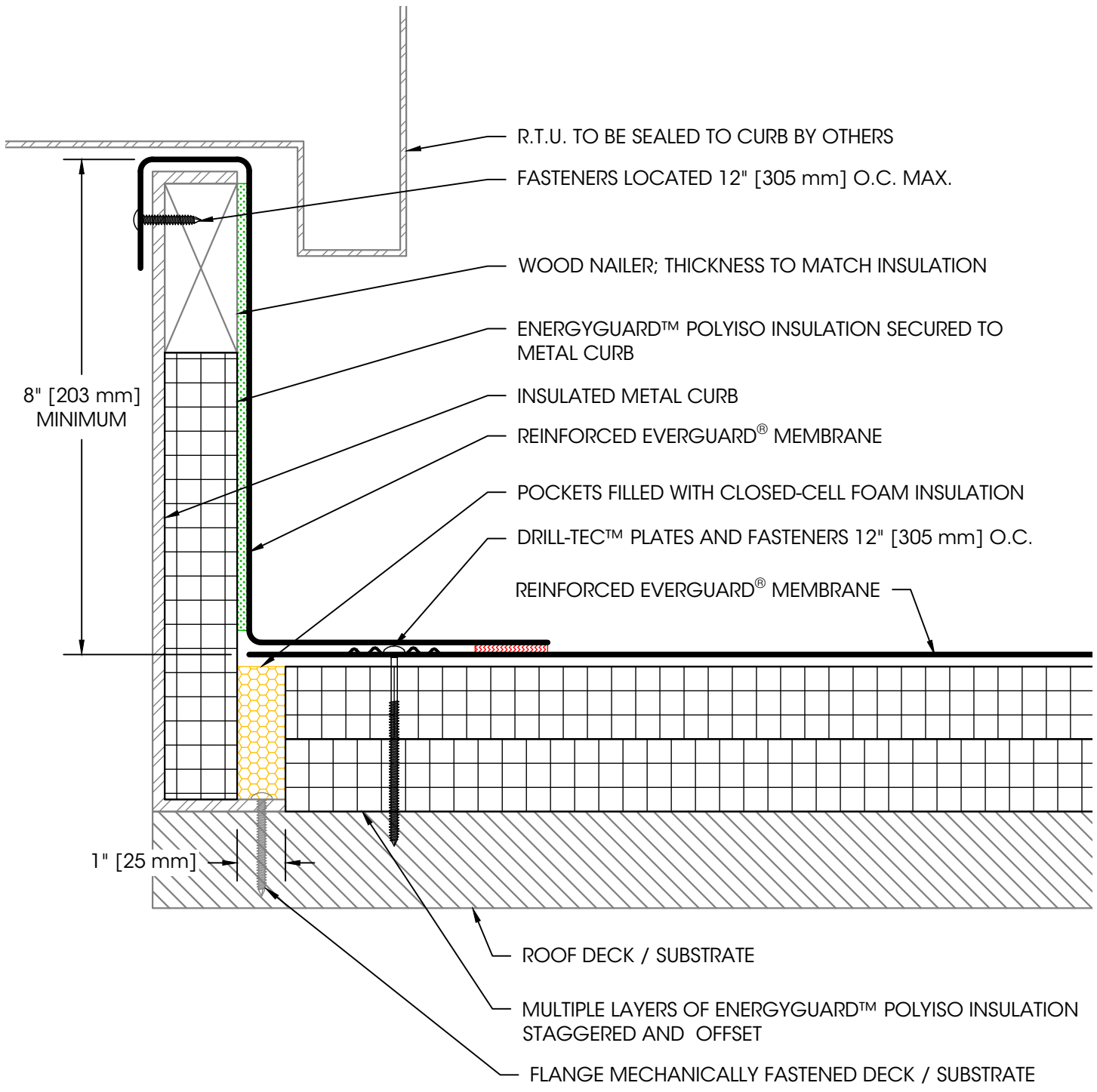
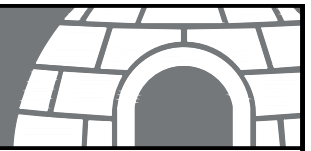
Roof Area:
Expansion Joints

Issue Date:
11/13/2023

Scale:
N.T.S.

Detail No:

403D



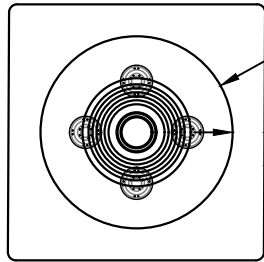
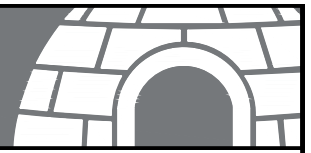
Notes:

1. For steel roof decks: Fill steel deck flutes with closed cell spray foam insulation prior to the installation of above deck insulation a minimum of 12" [305 mm] from opening on each side.

LEGEND	
	HEAT WELD
	ADHESIVE

R.T.U Curb Flashing

Roof Area: Penetrations		Detail No:
Issue Date: 11/13/2023	Scale: N.T.S.	503C



PLAN VIEW
(SEE NOTE #2)

EVERGUARD® PREMOLDED VENT BOOT

2" [51 mm] MIN.

REINFORCED EVERGUARD® MEMBRANE TARGET PATCH

VENT STACK OR PIPE PENETRATION

EVERGUARD® WATER-BLOCK OR FLEXSEAL™ CAULK-GRADE SEALANT

STAINLESS STEEL BAND CLAMP

EVERGUARD® PREMOLDED VENT BOOT

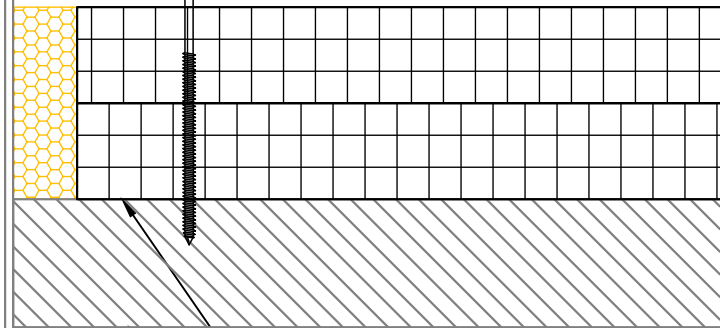
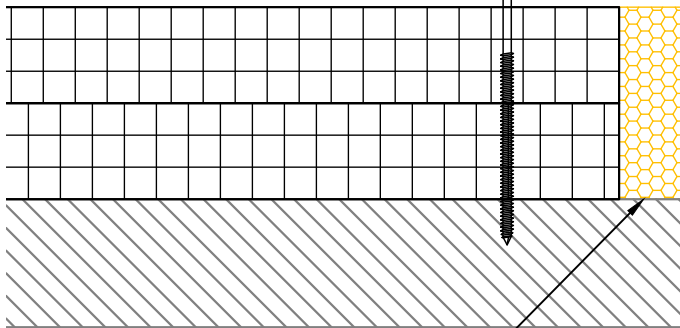
DRILL-TEC™ PLATES & FASTENERS, MIN. (4) PER PENETRATION

REINFORCED EVERGUARD® MEMBRANE

SHOWN WITH TARGET PATCH MADE FROM REINFORCED EVERGUARD® MEMBRANE; SEE NOTE #2

2" [51 mm] MIN.

1" [25 mm] MIN.



POCKETS FILLED WITH CLOSED-CELL FOAM INSULATION

MULTIPLE LAYERS OF ENERGYGUARD™ POLYISO INSULATION STAGGERED AND OFFSET

ROOF DECK / SUBSTRATE

Notes:

1. Do not cut through the side of the EverGuard® Premolded Pipe Boot to wrap around the pipe, it must be pulled over the top.
2. A target patch is required when the plates and fasteners extend into the flange area of the boot, or if the insulation thickness exceeds 12" [305 mm].
3. This detail is for use at locations with ambient interior temperatures only.

LEGEND

	HEAT WELD
	ADHESIVE
	SEALANT

Premolded Pipe Boot Installation

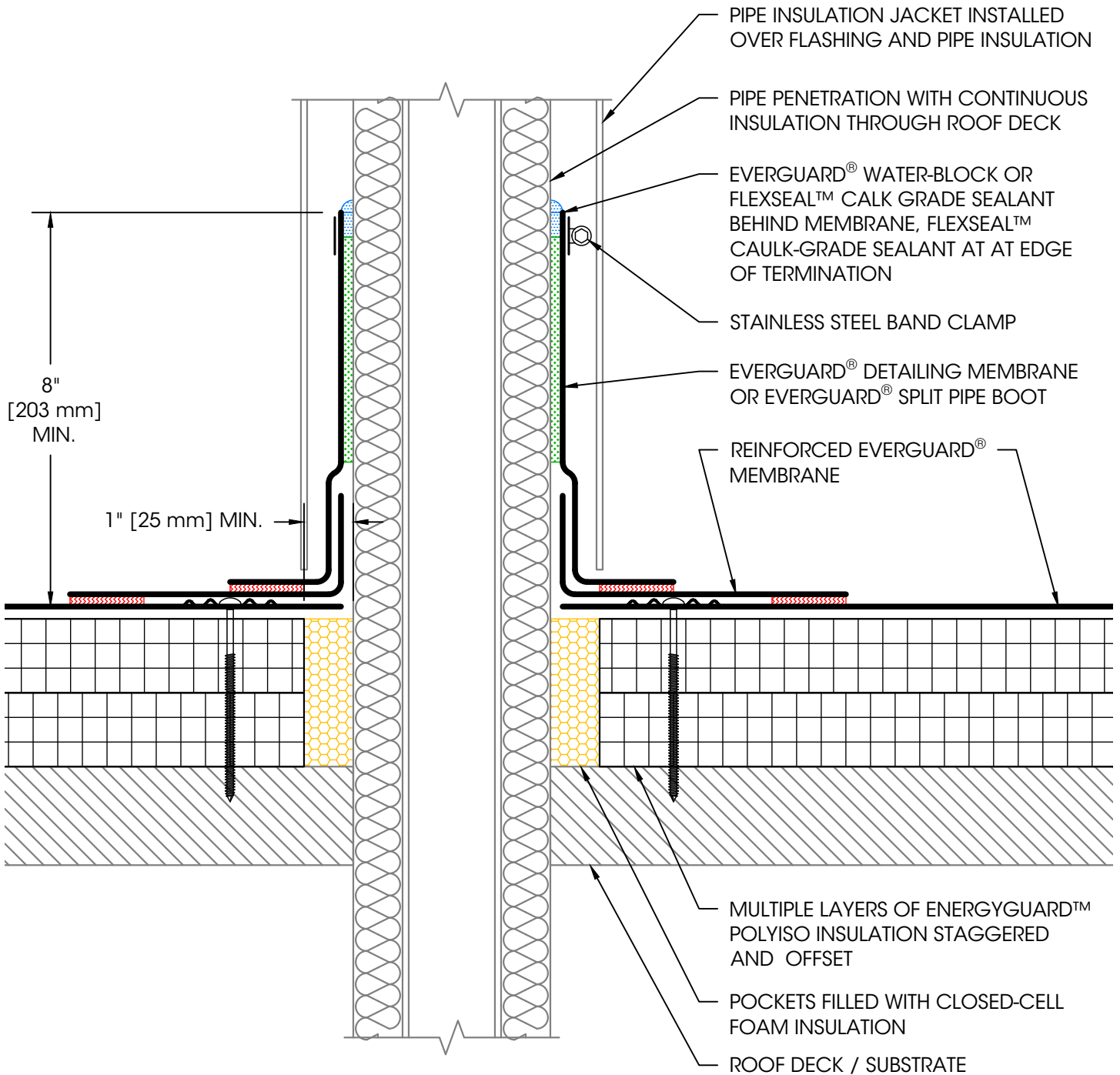
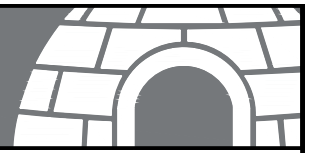
Roof Area:
Penetrations

Issue Date:
11/13/2023

Scale:
N.T.S.

Detail No:

506B



LEGEND

	HEAT WELD
	ADHESIVE
	SEALANT

Insulated Pipe Penetration Flashing

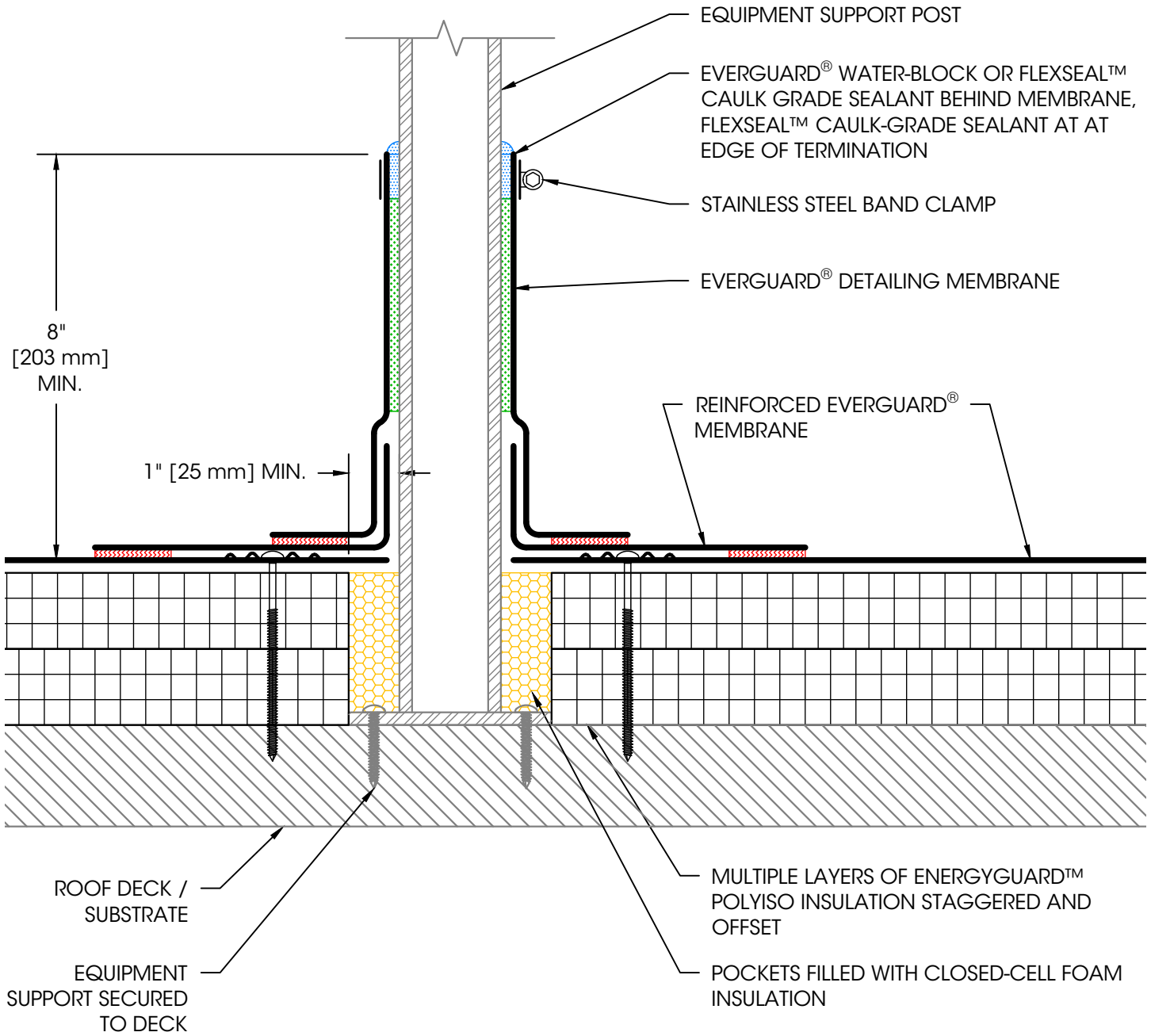
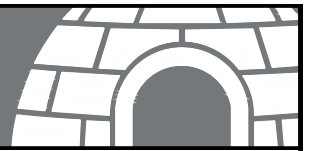
Roof Area:
Penetrations

Issue Date:
11/13/2023

Scale:
N.T.S.

Detail No:

506D



LEGEND

	HEAT WELD
	ADHESIVE
	SEALANT

Deck Mounted Equipment Support Flashing

Roof Area:
Penetrations

Issue Date:
11/13/2023

Scale:
N.T.S.

Detail No:

511C