



Master FlowTM Roof Louver SSB960 Metal Super Slant-Back

Remove excess heat and moisture from your attic
and protect your roof system from premature deterioration

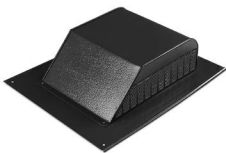


- Improve energy efficiency by reducing attic heat and your summer air-conditioning load
- Limit the growth of harmful mold and mildew
- Minimize peeling of paint, inside and out

Master Flow™ Roof Louver SSB960 Metal Super Slant-Back

Benefits:

- **Allows heat and moisture to escape** the attic on roofs with limited ridge line or when replacing existing roof louvers.
- **Slant-back design** offers strong protection against weather infiltration, especially on steep-slope applications.
- **60 sq. in. of NFA per vent (38,710 mm²)** helps provide 20% more venting capacity (vs. typical 50 sq. in. NFA vents [32,258 mm²]).
- **Available in aluminum or galvanized construction.**
- Available with an **optional internal weather- and ember-resistant screen.**¹
- **Popular colors** to complement your finished roof.
- **Pre-drilled nail holes** help make installation easy.
- **Eligible accessory product** in the Attic Ventilation category of GAF residential enhanced warranties.²



Balanced ventilation:

Balanced attic ventilation means an equal amount of air enters and exits. The amount of exhaust ventilation must **never** exceed the amount of intake ventilation at the soffits or eaves. GAF recommends a minimum of 1 sq. ft. of net free ventilation for every 300 sq. ft. of attic floor space. Always consult local building codes for specific ventilation requirements.

How much do I need?

Calculate the total square footage of your attic floor space and then review the chart below for how many Master Flow™ Roof Louver SSB960s are needed:

Total attic sq. footage	Recommended number of SSB960 Roof Louvers	Minimum intake ventilation (net free area in sq. in.)
0 – 1,000	4	240
1,001 – 1,500	6	360
1,501 – 2,000	8	480
2,001 – 2,500	10	600
2,501 – 3,000	12	720

Note: Chart above based on 1/300 rule. Always have a balanced attic ventilation system. In no case should the amount of exhaust ventilation, at or near the ridge, exceed the amount of intake ventilation, at or near the soffit. Visit gaf.com/ventcalculator for more details.

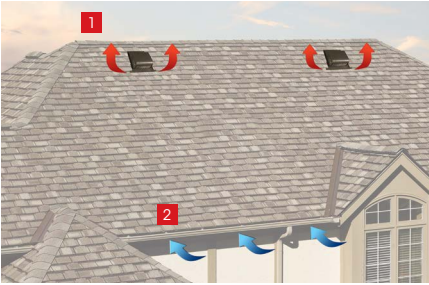
Product details:

Nominal Specifications

- 60 sq. in. of NFA per vent (38,710 mm²)
- Opening size: 10" (254 mm)
- Height: 5-1/2" (140 mm)
- For roof pitches 3:12 and greater
- **Optional weather- and ember-resistant screen:** Non-corrosive, non-combustible construction
- Colors available:
 - **SSB960A Aluminum:** Mill, Black, Brown, Weathered Wood, ShingleMatch™ Weathered Wood, and White
 - **SSB960AWF Aluminum w/Internal Screen:** Mill, Black, Brown, Weathered Wood, and White
 - **SSB960G Galvanized:** Black, Brown, and Weathered Wood
 - **SSB960GWF Galvanized w/Internal Screen:** Black, Brown, and Weathered Wood

Code Approvals & Standards

- Miami-Dade County Product Control Approved³
- State of Florida Approved³
- Texas Department of Insurance Product Evaluation RV-38
- Model with internal screen meets the prescriptive requirements of Chapter 7A-Materials and Construction Methods for Exterior Wildfire Exposure of the California Building Code, 2022 edition¹



1. Warm, moist air escapes attic through the **Master Flow™ Roof Louver SSB960.**
2. Fresh air enters attic through intake vents at or near the soffit.

¹ Always check with the authority having jurisdiction for approval before use.

² GAF makes no express or implied warranty about the fire performance of this product against Wildfire Exposure. Fire damage is not covered under the limited warranty. Please see the GAF Master Flow™ Ventilation Products, System Plus, Silver™ Pledge, or Golden Pledge® Limited Warranties for complete coverage and restrictions.

³ Aluminum models only.



We protect what matters most™

