

# GAF LRF Adhesive XF Canister

Low-Rise Foam Adhesive



## Description:

GAF LRF Adhesive XF Canister is a two-component, low-rise, solvent-free, polyurethane foamable adhesive that contains low-GWP (global warming potential) propellants. It's designed to adhere most roof insulations and cover boards to compatible substrates in both new and reroof applications, including jobs that require multiple insulation layers, as well as to adhere fleece-back single-ply membranes.\*

## Application:

Can adhere up to 24 squares of fleece-back membrane and up to 35 squares per set for insulation attachment, when installed in accordance with GAF's application instructions. Results may vary depending upon application temperature range, porosity of substrate and insulation boards, type of substrate, bead size, etc.

## Features and Benefits:

- Low-odor, low-VOC; uses a low GWP (global warming potential blowing agent); no HFC
- Application is quick and easy, and adhesive sets in minutes — helping improve installation productivity for the contractor
- Allows for faster membrane installation than traditional GAF bucket and roller adhesives
- Does not require any additional application equipment
- Helps reduce thermal bridging by expanding and rising to fill minor surface irregularities

## Compatible Roof Decks and Substrates:

(properly evaluated and prepared<sup>†</sup>)

- Structural concrete
- Gypsum
- Cementitious wood fiber plank
- Lightweight insulating concrete
- Steel (22 gauge or thicker with approved cross section)
- Plywood (5/8" [15.9 mm] thick min.)
- Smooth and granule-surfaced BUR
- Modified bitumen
- Existing sprayed-in-place polyurethane foam
- Base sheets
- Most vapor barriers (including asphaltic and fleece-top)

## Roof insulation and Cover Board<sup>1</sup>:

- Polyiso (polyisocyanurate) insulation (4' x 4' [13.1 m x 13.1 m] flat or tapered boards only)
- HD (high-density) polyiso cover board (4' x 4' [13.1 m x 13.1 m] boards only)
- High-density wood fiber
- Gypsum cover boards (4' x 4' or 4' x 8')
- Perlite
- Asphaltic cover boards
- Most extruded polystyrene (XPS) (check with manufacturer for compatibility)\*
- Most expanded polystyrene (EPS) (check with manufacturer for compatibility)\*

## Codes and Compliance:

- FM Approved per Approval Standard 4470. Refer to RoofNav.com for approved assemblies.



## Storage and Handling:

- NOTE: Contains hydrofluoroolefin (HFO).
- Store original, unopened containers in an upright position at 60° F – 90° F (15.6° C – 35° C)
- Store in a covered, secure location
- Keep from freezing
- Product stored below 60° F (15.6° C) requires sufficient time (minimum 24 hrs.) for the adhesive to warm to minimum 70° F (21.1° C) prior to use
- Do not store in direct sunlight or temperatures higher than 90° F (35° C)
- Improper storage techniques reduce anticipated shelf-life (12 months from date of manufacture)

\* For complete substrate preparation and application instructions for GAF guarantee-eligible systems, please consult the applicable system installation and specification manual available at [gaf.com](http://gaf.com). Not all uses of this adhesive with these substrates will comply with applicable codes. For installations that comply with applicable codes, refer to agency listings.  
<sup>†</sup> Coverage rates may vary by substrate. Please refer to the adhered installation manual for further information.



Visit [gaf.com](http://gaf.com)

We protect what matters most™





# LRF Adhesive XFCanister

Low-Rise Foam Adhesive

Watch our instructional video.



Insulation and Fleece-Back Membrane	
Ambient/Surface Install Temperature	32° F - 95° F degrees (1.7° C - 35° C)
Product Install Temperature	Tanks must be between 70° F - 85° F (21.1° C - 29.4° C) <sup>†</sup>
Storage Temperature	Cool, dry 55° F - 90° F (12.8° C - 35° C)
Coverage Rate Per Case/Set at 12" o.c. to Polyiso & Spatter Pattern to Fleece-back TPO/PVC Membrane	Per Set: Up to 24 sq. for fleece-back membrane <sup>§</sup> Up to 35 sq. for insulation <sup>§</sup>
Tack Time/Set-Up Time @ approx. 70° F (21.1° C)	3 - 5 min. tack time / 10 - 12 min. set-up time** NOTE: Tack/set-up time is dependent upon ambient temperature
Dispensing Unit	Dual Canister (Part A & Part B) with supplied hose and gun and tip
Packaging	Part A Canister (Includes 25 ft. [6.35 m] Hose/Gun/10 Tips/10 Shower caps/10 Extenders) Part B Canister
VOC Content	< 5 g/L (after mixing using SCAQMD Method 304)
Weight	Part A Canister 59.7 lb. (27.1 kg) Part B Canister 56 lb. (25.4 kg)
Shelf Life	12 months from date of manufacture

## RIBBON / SPATTER APPLICATION COVERAGE<sup>§</sup>

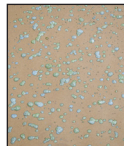
Ribbon Application (Insulation)			Spatter Application (Membrane)
4" (102 mm) on-center	6" (152 mm) on-center	12" (305 mm) on-center	3 lb. of adhesive per 100 sq. ft. of area
1165 sq. ft. coverage	1750 sq. ft. coverage	3500 sq. ft. coverage	2400 sq. ft. coverage

<sup>†</sup> Prior to application, store for approx. 36 to 72 hours at room temperature.

<sup>§</sup> When installed in accordance with GAF's application instructions. Results may vary depending upon application temperature range, porosity of substrate and insulation boards, type of substrate, bead size, etc.

\*\* Values stated are approximate and may vary based on ambient temperature. These values are not guaranteed and are provided solely as a guide.

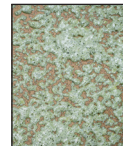
## EXAMPLES OF COVERAGE FOR SPLATTER PATTERNS



Not enough coverage



Good coverage



Too much coverage

Good coverage recommendations are based on a typical application of 3 lb. (1.36 kg) adhesive applied per 100 sq. ft. of area.

## EXAMPLES OF PROPER ADHESIVE RATIO FOR BEAD APPLICATION



Good ratio of Part A / Part B

Gray-green color.  
Low-rise, tacky foam after cure.



Too much of Part A

Slow to rise / no reaction.  
Yellow in color.  
Brittle foam after cure.



Too much of Part B

Very fast reaction / skin over.  
Blue-gray color.  
Soft, flexible foam after cure.



Visit [gaf.com](http://gaf.com)

We protect what matters most™

