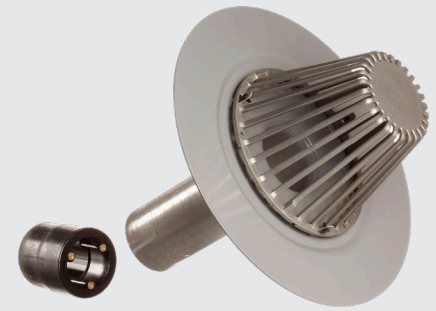


EverGuard® TPO-Coated  
**GAF Hercules® Drain**



## Description:

EverGuard® TPO Coated Hercules® Drains are part of the range of GAF single-ply roofing system prefashed accessories that provide roofing contractors with easy-to-install, factory-built details.

## Application:

EverGuard® TPO prefashed accessories are designed for use with EverGuard® and EverGuard® Extreme single-ply membranes. The prefashed accessories can be installed on mechanically attached, fully adhered, or self-adhered EverGuard® TPO roofing systems. Prefashed accessories are installed using conventional techniques. See published application and specifications manual for detailed instructions.

## Product Information:

The one-piece spun aluminum body has a TPO-coated flange for direct hot-air welding of TPO roof membranes. The drain flange has a depressed sump area to improve flow and facilitate drainage. The TPO RetroDrain is equipped with a heavy-duty cast aluminum strainer dome for strength and durability, and incorporates U-Flow® Seal technology, which helps provide a watertight mechanical connection to TPO or cast-iron pipes. Available in sizes compatible with 3" (76 mm), 4" (102 mm), 5" (127 mm), and 6" (152 mm) drain diameters.

- 0.125" (3.18 mm) 11 ga. spun aluminum
- Extra-large 17½" (445 mm) TPO-coated flange
- Sump area
- Welded metal clips with flange for dome attachment
- 12" (305 mm) long drain stem designed to bypass the existing drain bowl to the water leader
- Incorporates U-Flow® Seal technology for a secure, watertight connection when properly installed
- Simple and easy to install
- Available with a plastic strainer dome

Specifications				
Drain body	11 ga. 0.125" (3.18 mm) spun aluminum			
Flange	17.5" (445 mm) diameter with sump area			
Stem	12" (305 mm) length			
Shipping Specifications	3" (76 mm) compatible	4" (102 mm) compatible	5" (127 mm) compatible	6" (152 mm) compatible
Drain per carton	1			
Weight per box	7.4 lb. / 3.36 kg	7.9 lb. / 3.58 kg	7.9 lb. / 3.58 kg	8.5 lb. / 3.86 kg
Cartons per pallet	20			
Product SKUs				
	8523J	8523K	8523L	8523M



Visit [gaf.com](http://gaf.com)

For additional information, contact GAF Technical Support at **1-800-766-3411** or [technicalquestions@gaf.com](mailto:technicalquestions@gaf.com)

We protect what matters most™

