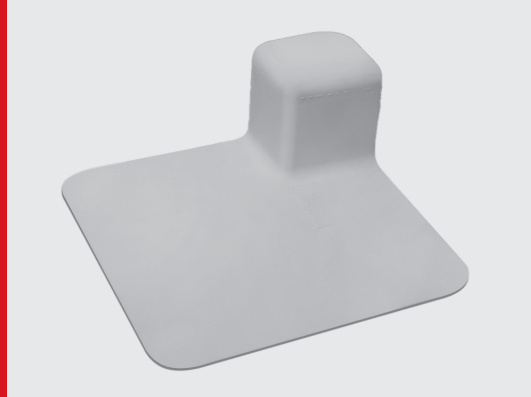


EverGuard® TPO and EverGuard Extreme® TPO

# GAF Universal Corner



## Description:

Increase efficiency when covering corners with factory-built EverGuard® and EverGuard Extreme® TPO Universal Corners. These single-ply roofing system molded accessories provide roofing contractors with an effective, easy-to-install detail. GAF manufactures these and other molded accessories using a proprietary formulation designed for use with GAF EverGuard® and EverGuard Extreme® TPO single-ply membranes. GAF TPO accessories can help you reduce installation costs, risk of leaks, and callbacks while helping you create a uniform look.

## Application:

Molded accessories may be installed on mechanically attached, fully adhered, or self-adhered EverGuard® and EverGuard Extreme® TPO roofing systems using conventional techniques. Simply cut the standard size at markings to produce either inside or outside corner reinforcements. See published application and specifications manual for detailed instructions.

## Product Information:

EverGuard® and EverGuard Extreme® TPO Universal Corners accommodate inside and outside corners of base and curb flashings. Universal Corners are manufactured with a thickness of 55 mils.

Specifications		
Dimensions	3" x 3" (76 mm x 76 mm) with 6" (152 mm) flange	
Thickness	.055 (1.40mm)	
Shipping Specifications		
Qty per box	20	
Weight per box	9 lb. / 4.08 kg	
Boxes per pallet	232	
Product SKUs	EverGuard® TPO	EverGuard Extreme® TPO
White	7730920NC	7733776CU



Visit [gaf.com](https://www.gaf.com)

For additional information, contact GAF Design Services at **1-877-423-7663** or [designservices@gaf.com](mailto:designservices@gaf.com)

We protect what matters most™

