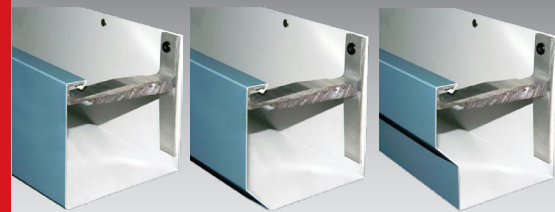


Edge Metal Water Control Accessories



EverGuard® WR Box Gutter

EverGuard® WR Chamfer Gutter

EverGuard® WR Offset Gutter

Description:

EverGuard® Gutters offer excellent water management and wind protection. What's more, they're available in three unique profiles to give you greater design flexibility:

- EverGuard® WR Box Gutter
- EverGuard® WR Chamfer Gutter
- EverGuard® WR Offset Gutter

All three systems incorporate a 1 inch-wide extruded internal gutter bracket for strength and support. The bracket also reduces the torque of the metal with expansion and contraction in temperature changes.

Box downspouts are available in a variety of standard sizes or can be fabricated to meet specific job requirements. They're manufactured with simple connection configurations and include three attachment straps per 12-ft. section, which enables fast and easy installation.

Features and Benefits:

- 2-piece, extruded aluminum internal bracket for excellent strength.
- Pre-punched holes and provided splice plates and fasteners for proper attachment and fast installation.
- Manufactured in 24 ga. or 22 ga. galvanized steel, or .040", .050", or .063" aluminum.
- Matching corners, trims, expansion joints, and accessories available.

Codes & Compliance:

- FM Approved



- State of Florida Approved

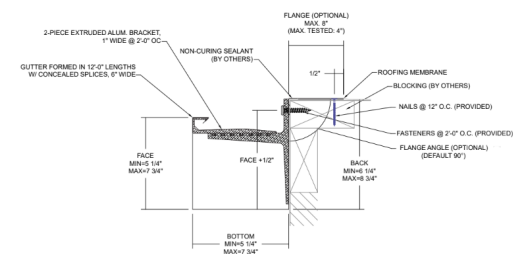


- Tested in accordance with ANSI/SPRI GT-1 Standard for Gutter Systems Used with Low-Slope Roofs.
- FM-approved for wind uplift protection. Refer to RoofNav.com for actual assemblies.

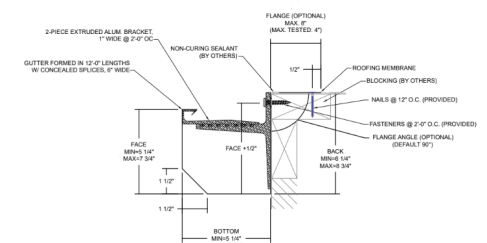
Standard Sizes:

Face	Bottom	Back
5.25"	5.25"	6.25"
5.75"	5.75"	6.75"
6.25"	6.25"	7.25"
6.75"	6.75"	7.75"
7.25"	7.25"	8.25"
7.75"	7.75"	8.75"

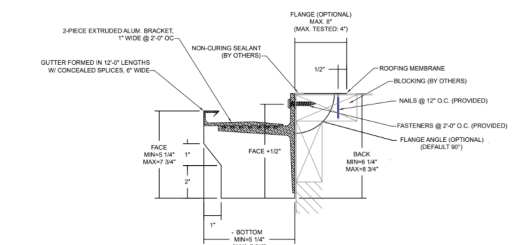
EverGuard® WR Box Gutter



EverGuard® WR Chamfer Gutter



EverGuard® WR Offset Gutter

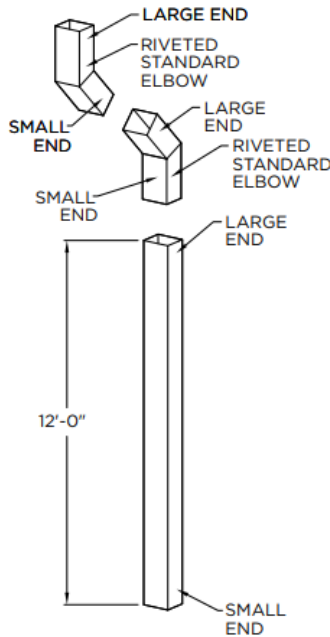
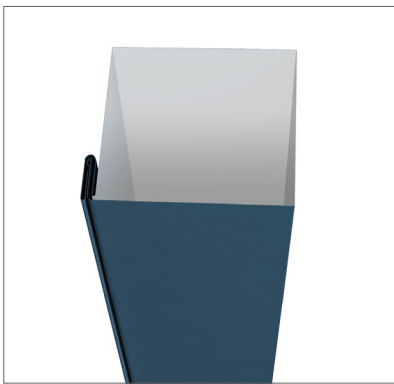


Visit gaf.com

For additional information, contact GAF Technical Support at 1-800-766-3411 or technicalquestions@gaf.com

Downspout:

Box Downspouts are available in a variety of standard sizes, or they can be fabricated to meet specific job requirements. Downspouts are manufactured with simple connection configurations and include three attachment straps per 12' section, which enables fast and easy installation



10 Express Colors¹

Express Colors are available for quick shipping to meet your job requirements.²



For standard and premium colors, please refer to the GAF color chart, available at gaf.com/perimeteredgemetal. Custom colors are also available.

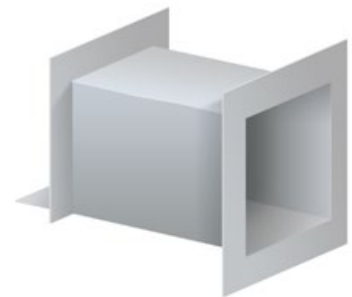
¹ It is difficult to reproduce the color clarity of these products. Before selecting your colors, please contact your local GAF territory manager to request a paint chip for accurate color representation.

² Express Colors available in shorter lead times for 24 ga., .040", and .050" only. Standard lead times, which may be longer, apply for 22 ga. and .063".

Other Water Control Products:

Scuppers and Conductor Heads
 (Multiple Versions Available)

Thru-Wall Scuppers



Conductor Heads



Thru-Wall Scuppers with Conductor Heads



Visit **gaf.com**

For additional information, contact GAF Technical Support at **1-800-766-3411** or technicalquestions@gaf.com

We protect what matters most™

