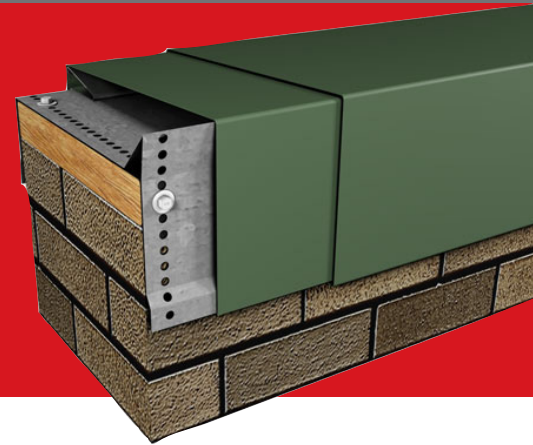


Perimeter Edge Metal

EverGuard® GAF GoldCoping Existing Slope, Flat and Tapered



Description:

EverGuard® Gold Coping protects your building's parapet conditions while also complementing their natural aesthetics. We offer a variety of color options, including standard and custom, as well as a variety of finish options, including anodized. Easy-to-install EverGuard® Gold Coping gives you design flexibility and great value.

Features and Benefits:

- 8" concealed splice plates with dual non-curling isocryl butyl sealant strips allow for thermal movement of materials and sealing of joints.
- Factory-fabricated miters provide a clean, aesthetically pleasing appearance, and can help save time by eliminating the need for field fabrication.
- 12", 16 ga. spring clip provides for positive attachment, helping to ensure stability for the system. Splice plates and fasteners are included.
- Corrosion-resistant stainless steel¹ springs attached to anchor clips provide long-term, positive spring loading.
- Express, standard, and premium colors and finishes are available to meet your job requirements and include a 30-year limited Kynar 500® finish warranty on coil-coated standard colors. For limited warranty details, please visit gaf.com.
- Custom colors are also available. A 10-year limited warranty is included for post-painted Kynar®-coated aluminum applications unless otherwise stated. A 20-year limited warranty may be available upon request for certain colors.²

¹ GAF warranties and guarantees do not cover corrosion. See the *GAF Perimeter Edge Metal Limited Warranty*, available at gaf.com, for complete coverage and restrictions.

² Restrictions may apply; consult a sales representative for specific information.

Codes/Testing Compliance:

- Tested per ANSI/SPRI/FM 4435/ES-1 Standard to comply with the International Building Code.
- FM-approved for wind uplift protection. See RoofNav.com for specific assemblies.



Express Colors¹ available for quick shipping²



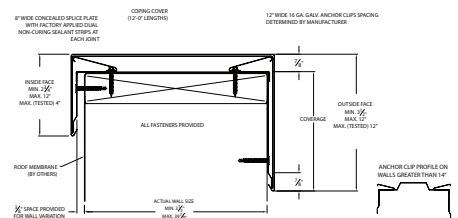
For standard and premium colors, please refer to the GAF color chart, available at gaf.com/PerimeterEdgeMetal. Custom colors are also available.

¹ Express Colors available in shorter lead times for 24 ga., .040", and .050" only. Standard lead times, which may be longer, apply for 22 ga. and .063".

² It is difficult to reproduce the color clarity of these products. Before selecting your color, please contact your local GAF territory manager to request a paint chip for accurate color representation.

Product Specifications

AVAILABLE SIZES	MINIMUM	MAXIMUM
Inside face	2.75" (69.85 mm)	12" (304.8 mm) (Max. Tested 4" (101.6 mm))
Wall size	3.5" (88.9 mm)	39.875" (1,012.8 mm) (Max Tested 32" (812.8 mm))
Outside face	3.5" (88.9 mm)	12" (305 mm) (Max Tested 12" (305 mm))
LENGTH	12 ft. (6.10 m)	
COVER MATERIALS	24 ga. steel 22 ga. steel 0.040" aluminum 0.050" aluminum 0.063" aluminum	
FINISHES	Mill aluminum Pre-finished Kynar 500® (See standard color chart) Premium pre-finished Kynar 500® (See standard color chart) Post-finished Kynar 500® Pre-finished anodized aluminum - clear, bronze, or black Post-finished anodized aluminum Custom post-coated Kynar 500® finishes are available	
PERFORATED HOLES	12" (305 mm) o.c.	



Visit gaf.com/PerimeterEdgeMetal

We protect what matters most™

