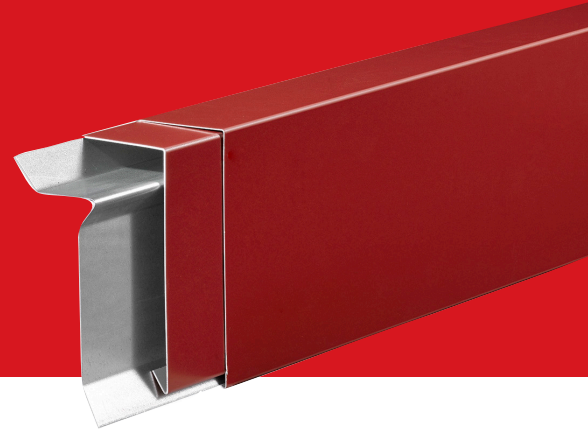
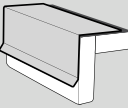


Perimeter Edge Metal



Description:

EverGuard® EZ Fascias compose a three-part assembly with a rigid formed retainer, decorative snap-on fascia cover, and matching splice plates for single-ply roofs. EverGuard® EZ Fascia provides superior protection from wind and water penetration versus shop-fabricated roof edge.

Features and Benefits:

- Fast and easy installation, eliminating the need for "stripping in" that is typical of other roof edge designs.
- Retainers are self-locating with pre-punched slots to accommodate thermal expansion and contraction and reduce installation time.
- EverGuard® EZ Fascia includes 20 ga. galvanized steel retainers.
- Sizes range from 3 1/2" – 7 3/4" (89 mm – 197 mm) face heights to accommodate multiple nailers and wall requirements.
- Covers can be manufactured in 22 ga. and 24 ga. galvanized steel (stainless steel available through custom order) or .040", .050", and .063" aluminum.
- Factory-fabricated miters, scuppers, and drainage accessories provide a clean aesthetic and can help save time by eliminating the need for field fabrication.
- Express, standard, and premium colors and finishes are available to meet your job requirements, and include a 30-year limited Kynar 500® finish warranty on coil-coated standard colors. For limited warranty details, please visit gaf.com.
- Custom colors are also available. A 10-year limited warranty is included for post-painted Kynar®-coated aluminum applications unless otherwise stated. A 20-year limited warranty may be available upon request for certain colors.*

* Restrictions apply; consult your GAF Territory Manager for more information.

Codes/Testing Compliance

- Tested in accordance with ANSI/SPRI/FM 4435/ES-1 Standard to comply with the International Building Code.
- FM-approved for wind uplift protection. Refer to RoofNav.com for actual assemblies.



10 Express Colors¹

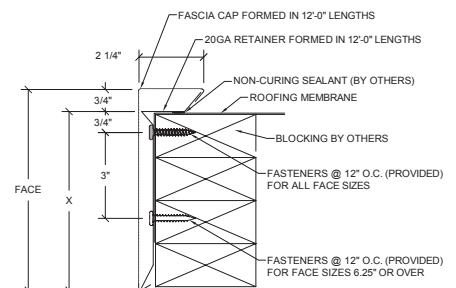
Express Colors are available for quick shipping to meet your job requirements.²



For standard and premium colors, please refer to the GAF color chart, available at gaf.com/perimeteredgemetal. Custom colors are also available.

¹ Express Colors available in shorter lead times for 24 ga., .040", and .050" only. Standard lead times, which may be longer, apply for 22 ga. and .063".

² It is difficult to reproduce the color clarity of these products. Before selecting your color, please contact your local GAF territory manager to request a paint chip for accurate color representation.



Product Specifications

STANDARD SIZES	3.50 in. (89 mm) 4.75 in. (121 mm) 6.25 in. (159 mm) 7.75 in. (197 mm)
LENGTH	12 ft. (6.10 m)
MATERIALS	22 ga. galvanized (stainless steel available through custom order) 24 ga. galvanized (stainless steel available through custom order) .040", .050", .063" aluminum
FINISHES	Mill aluminum Pre-finished Kynar 500® (See standard color chart) Premium pre-finished Kynar 500® (See standard color chart) Post-finished Kynar 500® Pre-finished anodized aluminum — clear, bronze, or black Post-finished anodized aluminum Custom post-coated Kynar 500® finishes are available
PRE-PUNCHED HOLES	12 in. (305 mm) o.c.



Visit gaf.com/PerimeterEdgeMetal

We protect what matters most™

