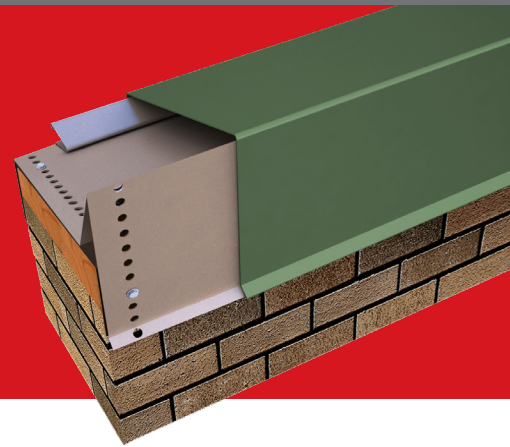


# Perimeter Edge Metal



## EverGuard® Coping Flat, Tapered, and Existing Slope



### Description:

EverGuard® Coping protects your building's parapet conditions while also complementing their natural aesthetics. We offer a variety of color options, including standard and custom, as well as a variety of finish options, including anodized. Easy-to-install EverGuard® Coping gives you design flexibility and great value.

### Features and Benefits:

- 8" concealed splice plates with dual non-curling isocryl butyl sealant strips allow for thermal movement of materials and sealing of joints.
- Factory-fabricated miters provide a clean, aesthetically pleasing appearance, and can help save time by eliminating the need for field fabrication.
- 12", 20 ga. spring clip provides for positive attachment, helping to ensure stability for the system. Splice plates and fasteners are included.
- Corrosion-resistant stainless steel<sup>1</sup> springs attached to anchor clips provide long-term, positive spring loading.
- Express, standard, and premium colors and finishes are available to meet your job requirements and include a 30-year limited Kynar 500® finish warranty on coil-coated standard colors. For limited warranty details, please visit [gaf.com](http://gaf.com). Custom colors are also available.
- A 10-year limited warranty is included for post-painted Kynar®-coated aluminum applications unless otherwise stated. A 20-year limited warranty may be available upon request for certain colors.<sup>2</sup>

<sup>1</sup> GAF warranties and guarantees do not cover corrosion. See the *GAF Perimeter Edge Metal Limited Warranty*, available at [gaf.com](http://gaf.com), for complete coverage and restrictions.

<sup>2</sup> Restrictions may apply; consult a sales representative for specific information.

### Codes/Testing Compliance:

- Tested per ANSI/SPRI/FM 4435/ES-1 Standard to comply with the International Building Code.
- FM-approved for wind uplift protection. See [RoofNav.com](http://RoofNav.com) for specific assemblies.



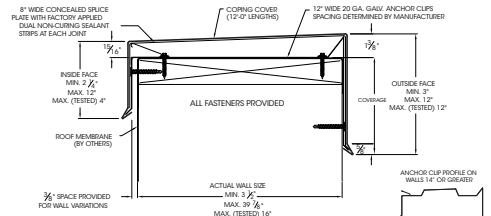
### Express Colors\* available for quick shipping\*\*



For standard and premium colors, please refer to the GAF color chart, available at [gaf.com/PerimeterEdgeMetal](http://gaf.com/PerimeterEdgeMetal). Custom colors are also available.

\* Express Colors available in shorter lead times for 24 ga., .040", and .050" only. Standard lead times, which may be longer, apply for 22 ga. and .063".

\*\* It is difficult to reproduce the color clarity of these products. Before selecting your color, please contact your local GAF territory manager to request a paint chip for accurate color representation.



### Product Specifications

AVAILABLE SIZES	MINIMUM	MAXIMUM
Inside face	2.25" (57.15 mm)	12" (304.8 mm) (Max. Tested 4" [101.6 mm])
Wall size	3.5" (88.9 mm)	39.875" (1,012.8 mm) (Max Tested 16" [419.1 mm])
Outside face	3" (76.2 mm)	12" (305 mm) (Max Tested 12" [305 mm])
<b>LENGTH</b>	12 ft. (6.10 m)	
<b>COVER MATERIALS</b>	24 ga. steel 22 ga. steel 0.040" aluminum 0.050" aluminum 0.063" aluminum	
<b>FINISHES</b>	Mill aluminum Pre-finished Kynar 500® (See standard color chart) Premium pre-finished Kynar 500® (See standard color chart) Post-finished Kynar 500® Pre-finished anodized aluminum – clear, bronze, or black Post-finished anodized aluminum Custom post-coated Kynar 500® finishes are available	
<b>PERFORATED HOLES</b>	12" (305 mm) o.c.	



Visit [gaf.com/PerimeterEdgeMetal](http://gaf.com/PerimeterEdgeMetal)

We protect what matters most™

